

**NADGIGOMAR NATURE RESERVE**  
**Fire Operations Map**  
**2007**  
 Sheet 2 of 2

This strategy should be used in conjunction with aerial photography and field reconnaissance during incidents and the development of incident action plans.  
 These data are not guaranteed to be free from error or omission. The NSW National Parks and Wildlife Service and its employees disclaim liability for any act done on the information in the data and any consequences of such acts or omissions.  
 This document is copyright. Apart from any fair dealing for the purpose of study, research criticism or review, as permitted under the Copyright Act, no part may be reproduced by any process without written permission.  
 This strategy is a relevant Plan under Section 38 (4) and Section 44 (2) of Rural Fires Act 1937.  
 The NSW National Parks and Wildlife Service is part of the Department of Environment and Climate Change.  
 Published by the Department of Environment and Climate Change (NSW), October 2007  
 Contact: NPWS Far South Coast Region, PO Box 656 Merimbula 2548  
 ISBN 978 1 74122 472 6 DECC 2007/294 Date Approved: 21/1/2008

**Operational Guidelines**  
 Refer to Strategy for Fire Management 2003 and Fire Management Manual 2005.  
 Brief all personnel involved in suppression operations on the following issues:

**General**  
 Refer to Strategy for Fire Management 2003 and Fire Management Manual 2005.

**Aerial Water Bombing**  
 NPWS FMA 4.4 (2007) Fire Management Manual 2005  
 NPWS FMA 4.4 (2007) Fire Management Manual 2005  
 NPWS FMA 4.4 (2007) Fire Management Manual 2005

**Aerial Ignition**  
 NPWS FMA 4.4 (2007) Fire Management Manual 2005  
 NPWS FMA 4.4 (2007) Fire Management Manual 2005  
 NPWS FMA 4.4 (2007) Fire Management Manual 2005

**Backburning**  
 NPWS FMA 4.6

**Command & Control**  
 NPWS FMA 4.5

**Containment Lines**  
 NPWS FMA 2.2.1.3.9

**Earthmoving Equipment**  
 NPWS FMA 4.2.2.4.3

**Fire Advantage**  
 NPWS FMA 4.2.2.4.3

**Fire Suppression**  
 NPWS FMA 4.2.2.4.3

**Rehabilitation**  
 NPWS FMA 4.5

**Smoke Management**  
 NPWS FMA 4.1

**Visitor Management**  
 NPWS FMA 3.2.4.1.5

**Aboriginal Cultural Heritage**  
 NPWS FMA 4.1.1

**Site Management**

**A1**  
 As far as possible protect site from fire.  
 Do not cut down trees.  
 Use of tools, vehicles agents & retardant is acceptable.

**A2**  
 As far as possible grade site.  
 Avoid ground disturbance including handtools, sizes.  
 Avoid water bombing which may cause ground disturbance.  
 Avoid ground disturbance including handtools, sizes.  
 Avoid water bombing which may cause ground disturbance.  
 Site may be burnt by wildfire, backburn, prescribed burn.

**A3**  
 NPWS Regional Cultural Heritage Management Strategy.  
 In areas where the asset may be at risk from water, wind or debris, no work or material to be used.  
 Earthmoving machinery is to be avoided, unless otherwise authorised.

**Historic Heritage Management**  
 NPWS FMA 4.1.2

**HS1**  
 High RCHMS priority.  
 Avoid fire, including wildfire, backburning & HR.  
 Avoid all water bombing activities.

**HS2**  
 High RCHMS priority.  
 Avoid fire, including wildfire, backburning & HR.  
 High or low RCHMS priority.  
 Heritage site unlikely to be affected by fire.  
 Damage to any fire crew activity. Avoid site at all costs.  
 Low RCHMS priority.

**HS3**  
 High RCHMS priority.  
 Avoid fire, including wildfire, backburning & HR.  
 Avoid all water bombing activities.

**HS4**  
 Low RCHMS priority.  
 Avoid fire, including wildfire, backburning & HR.  
 High or low RCHMS priority.  
 Heritage site unlikely to be affected by fire.  
 Avoid use of earth moving machinery.

**HS5**  
 High or low RCHMS priority.  
 Avoid fire, including wildfire, backburning & HR, as far as possible in wetland habitat.  
 Avoid use of earth moving machinery in wetland habitats.

**HS6**  
 High or low RCHMS priority.  
 Avoid fire, including wildfire, backburning & HR, as far as possible in wetland habitat.  
 Avoid use of earth moving machinery in wetland habitats.

**HS7**  
 High or low RCHMS priority.  
 Avoid fire, including wildfire, backburning & HR, as far as possible in wetland habitat.  
 Avoid use of earth moving machinery in wetland habitats.

**HS8**  
 High or low RCHMS priority.  
 Avoid fire, including wildfire, backburning & HR, as far as possible in wetland habitat.  
 Avoid use of earth moving machinery in wetland habitats.

**Threatened Fauna Management**  
 NPWS FMA 4.2.2.5.2

**FA1**  
 Protect large and hollow bearing trees.  
 Protect large and hollow bearing trees.  
 Avoid intervals of < 10 yrs.  
 Avoid high intensity fire that consume tree canopies and fallen logs.

**FA2**  
 Avoid intervals of < 10 yrs.

**FA3**  
 Avoid intervals of < 10 yrs.

**FA4**  
 Habitat unlikely to be affected by fire.  
 Avoid use of earth moving machinery in wetland habitats.  
 Avoid use of retardant and foam in wetland habitats.

**FA5**  
 Habitat unlikely to be affected by fire.  
 Avoid use of earth moving machinery in dune habitats.  
 Avoid fire, including wildfire, backburning & HR, as far as possible in wetland habitat.  
 Avoid use of earth moving machinery in wetland habitats.

**FA6**  
 Habitat unlikely to be affected by fire.  
 Avoid use of earth moving machinery in dune habitats.  
 Avoid fire, including wildfire, backburning & HR, as far as possible in wetland habitat.  
 Avoid use of earth moving machinery in wetland habitats.

**FA7**  
 Avoid high intensity fire that consume tree canopies and fallen logs.  
 Avoid fire, including wildfire, backburning & HR, as far as possible.

**FA8**  
 Avoid use of earth moving machinery.

**Threatened Flora Management**  
 NPWS FMA 4.1.2

**FL1**  
 Avoid intervals of < 10 yrs.  
 Avoid the use of earthmoving machinery.  
 Avoid the use of retardant.  
 Avoid fire, including wildfire, backburning & HR, as far as possible.  
 Avoid the use of earthmoving machinery.

**FL2**  
 Avoid intervals of < 10 yrs.  
 Avoid the use of retardant.  
 Avoid high intensity fire.  
 Avoid intervals < 10 years, effect unknown.  
 Avoid fire of earth moving machinery.  
 Avoid summer fire.  
 Avoid high intensity fire.  
 Avoid earthmoving machinery.

**FL3**  
 Avoid intervals of < 10 yrs.  
 Avoid the use of earth moving machinery.  
 Avoid low intensity fire.  
 Avoid intervals of < 5 yrs.  
 Avoid earthmoving machinery.

**FL4**  
 Avoid intervals of < 10 yrs.  
 Avoid the use of earth moving machinery.  
 Avoid high intensity fire.  
 Avoid earthmoving machinery.

**FL5**  
 Avoid intervals of < 10 yrs.  
 Avoid the use of earth moving machinery.  
 Avoid low intensity fire.  
 Avoid intervals of < 5 yrs.  
 Avoid earthmoving machinery.

**Threatened Property**  
 NPWS FMA 4.1.2

Where possible property owners with assets at risk from a wildfire event should be kept informed regarding the progress of the fire, and asked for an assessment of their current level of asset protection preparedness.

**Communications Information**

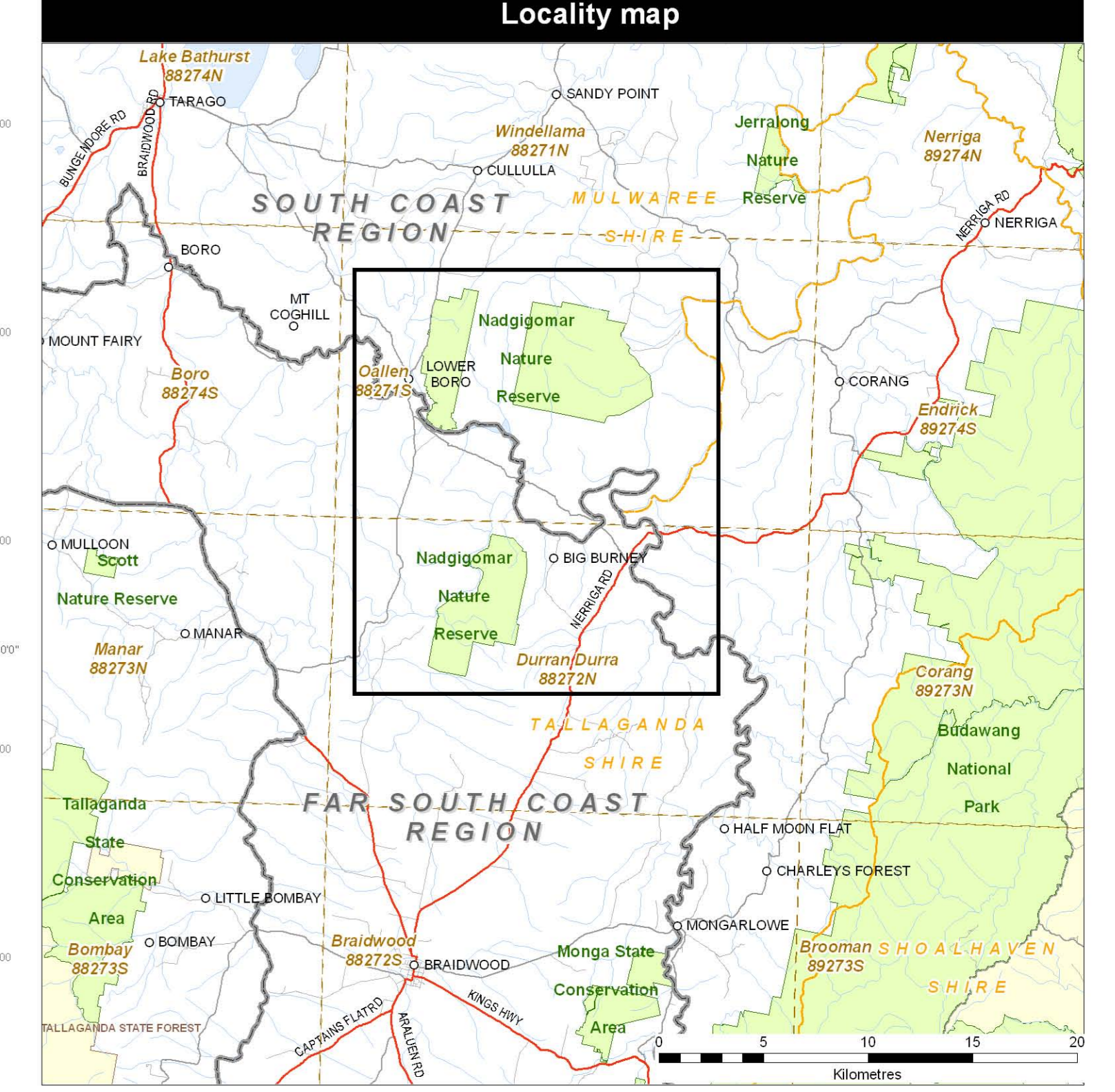
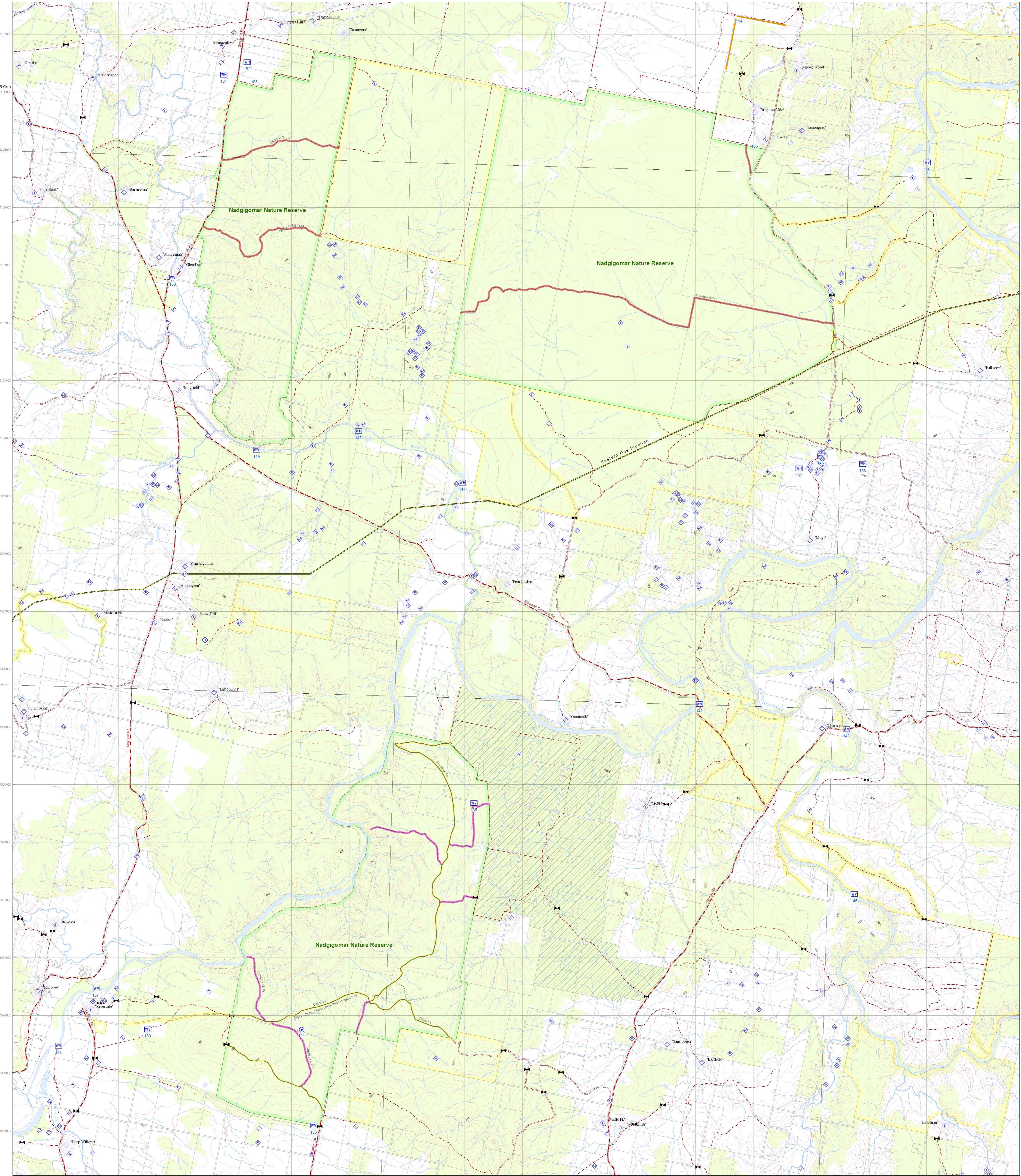
**Service**  
 Channel Location and Comments

**VHF Communications (NPWS Two Way Radios)**  
 30 & 32 Reception is good on high areas and fair reception in lower elevations of the reserve

**VHF-PAR (RFA Two Way Radios)**  
 61, 61.5, 33 Reception is usually good for all channels

**Mobile Phone**  
 CDMA - variable GSM / Digital - poor

**Amation Frequencies**  
 118.10 All to fireground  
 123.45 The numbers - all to air general comm only  
 122.85, 123.85 All to base  
 124.65, 125.45 All to base  
 130.65, 134.70 All to base



**Contact Information**

Agency	Position / Location	Phone
NSW National Parks & Wildlife Service (Dept. of Environment & Climate Change)	Norwa Office (0830-1630 Mon-Fri)	(02) 4423 2170
	Narooma Office (office hours)	(02) 4476 2888
	Braidwood Office (office hours)	(02) 4842 1426
	NPWS Incident Response Answering Service (after hours)	1800 629 104
NSW Rural Fire Service	Lake George Fire Control - Queanbeyan office	6297 1840
	Braidwood office	4842 2516
	Duty Officer	0408 633 231
	Goulburn-Mulwaree Fire Control	4822 2000
SES	Emergency	132 500
	Braidwood Headquarters	(02) 4842 2533
Police	Goulburn Headquarters	(02) 4822 1800
	Emergency	000
Ambulance	Braidwood	(02) 4842 2101
	Terragong	(02) 4849 4411
Hospital	Goulburn	(02) 4824 0789
	Emergency	000
Council	Bookings	131 233
	Braidwood	(02) 4842 2566
Council	Queanbeyan	(02) 6256 9211
	Palerang Shire Council	1300 735 025
	Goulburn-Mulwaree Shire Council	(02) 4823 4444

**Waypoints**

Map ref.	Type	Easting	Northing
135	Water Point Vehicle	759161	6093677
136	Water Point Vehicle	756381	6088090
137	Water Point Vehicle	752820	6090465
138	Water Point Vehicle	751981	6089470
139	Water Point Vehicle	753509	6089759
142	Water Point Vehicle	76307	6095393
143	Water Point Vehicle	765913	6094959
144	Helipad	756176	6089761
145	Water Point Vehicle	765747	6092100
146	Water Point Vehicle	765166	6099689
147	Water Point Helicopter	757159	6100122
148	Water Point Helicopter	756661	6096227
149	Water Point Helicopter	755396	6099799
150	Water Point Vehicle	753942	6102784
151	Water Point Helicopter	754827	6106300
152	Water Point Helicopter	755228	6105518
153	Staging Area	755357	6106232
154	Staging Area	763757	6107284
155	Staging Area	764204	6105117
156	Water Point Vehicle	767012	6104781
157	Water Point Helicopter	764793	6099479
158	Water Point Helicopter	765898	6099555

**Legend**

Assets	Fire control advantages	Elevation contours
Threatened fauna	Water Point Vehicle	10 metre
Threatened flora	Water Point Helicopter	100 metre
European Sites (EHIMS)	Assembly Area	High point
Aboriginal site (type 1)	Water Vehicle	
Aboriginal site (type 2)	Helipad (not maintained)	River/creek
Aboriginal site (type 3)	Refuge Area	Watercourse (perennial)
Powertine	Helipad	Watercourse (intermittent)
Buildup area	Landing ground	Waterbody
Gas pipeline	Major sealed road	Tenure
Pine plantation	Minor sealed road	NPWS estate
On-park access (BFCC class)	All weather unsealed track	State Forest
Essential	Dry weather only track	Crown land
Important	4WD track	Cadastre
Dormant	Gate	Vegetation cover
Trail capacity		Grassland/Pasture
Cat 1		Heathland/Woodland
Cat 7		Forest/Rainforest
Cat 9		

