


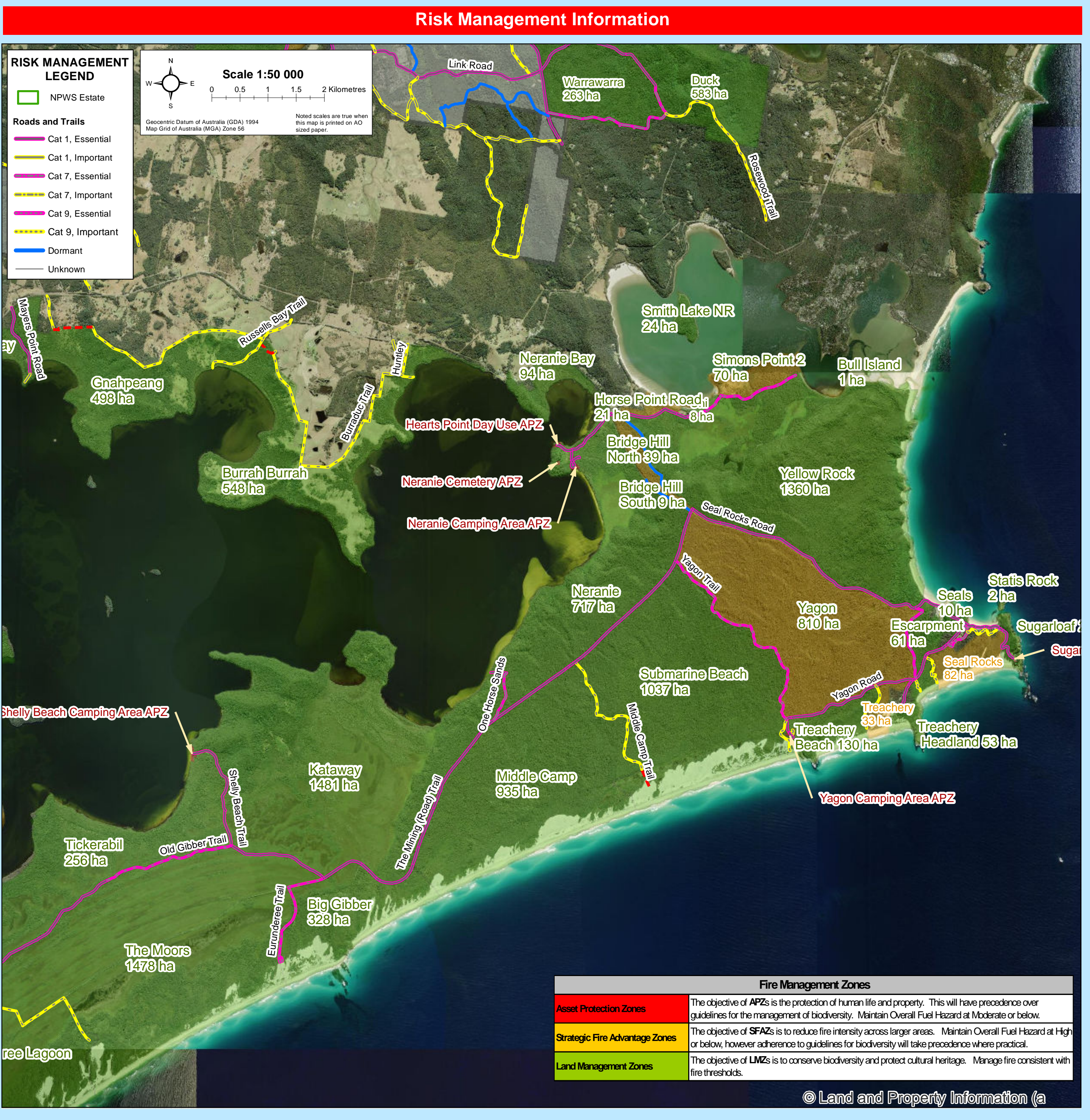
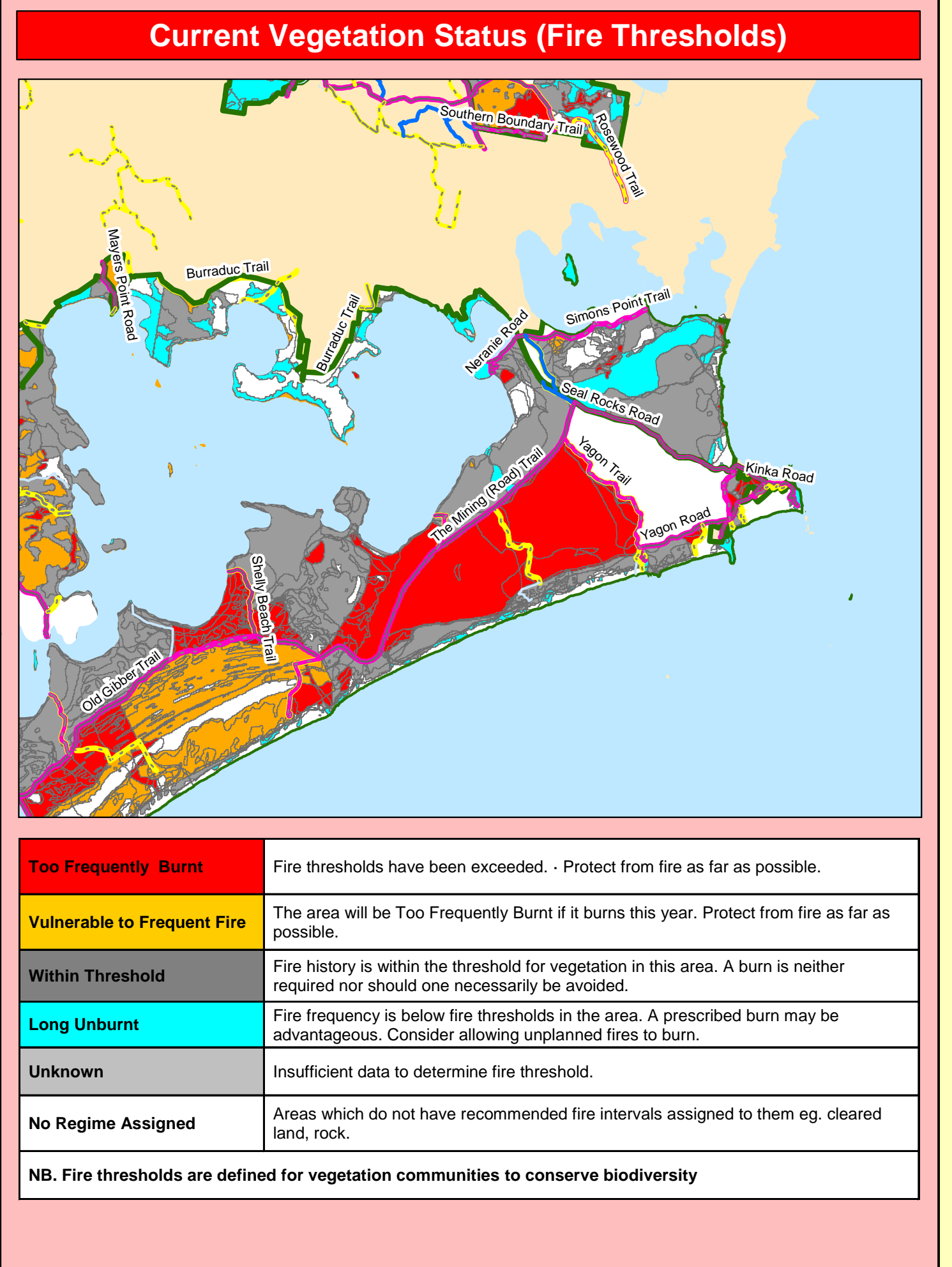
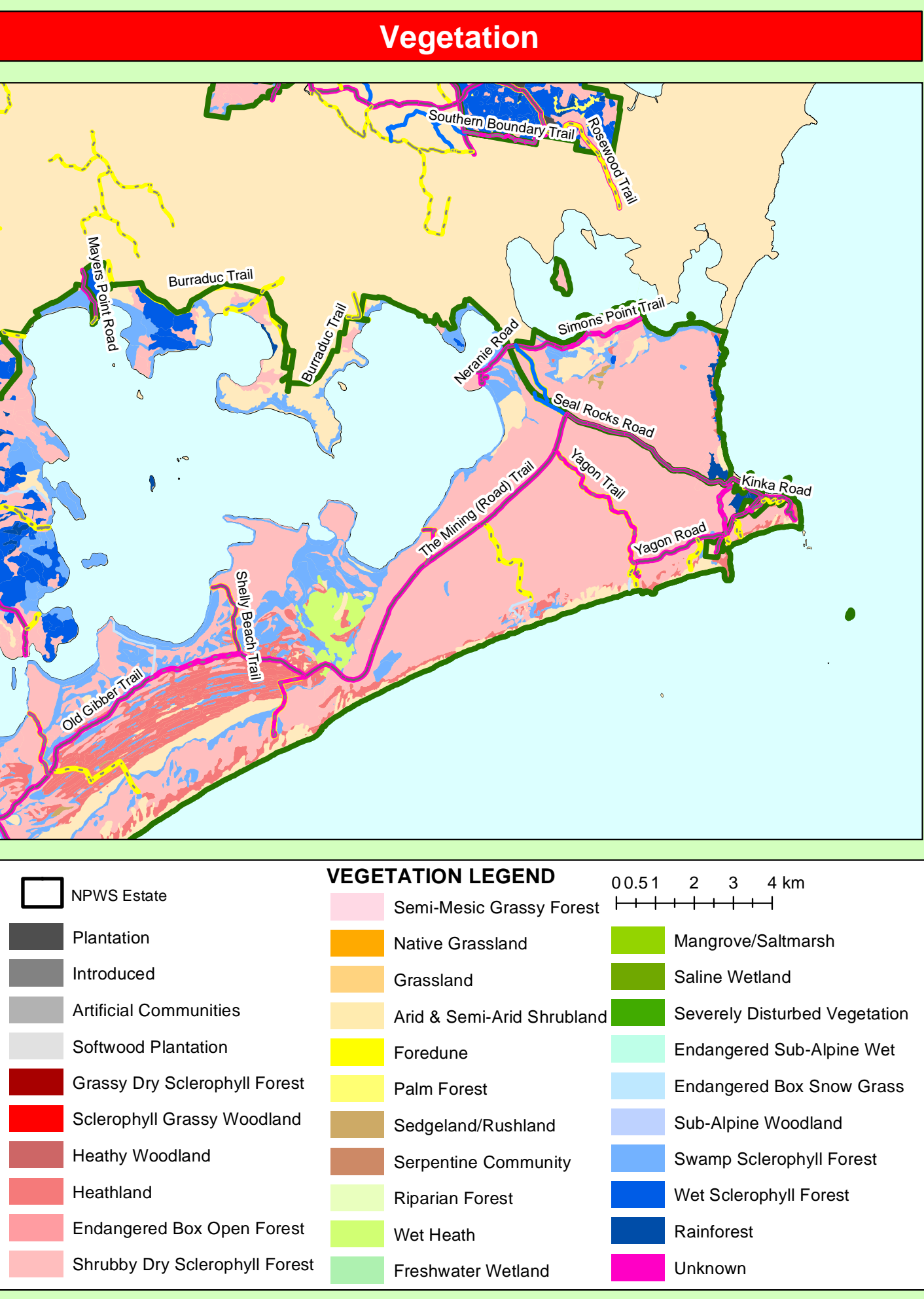
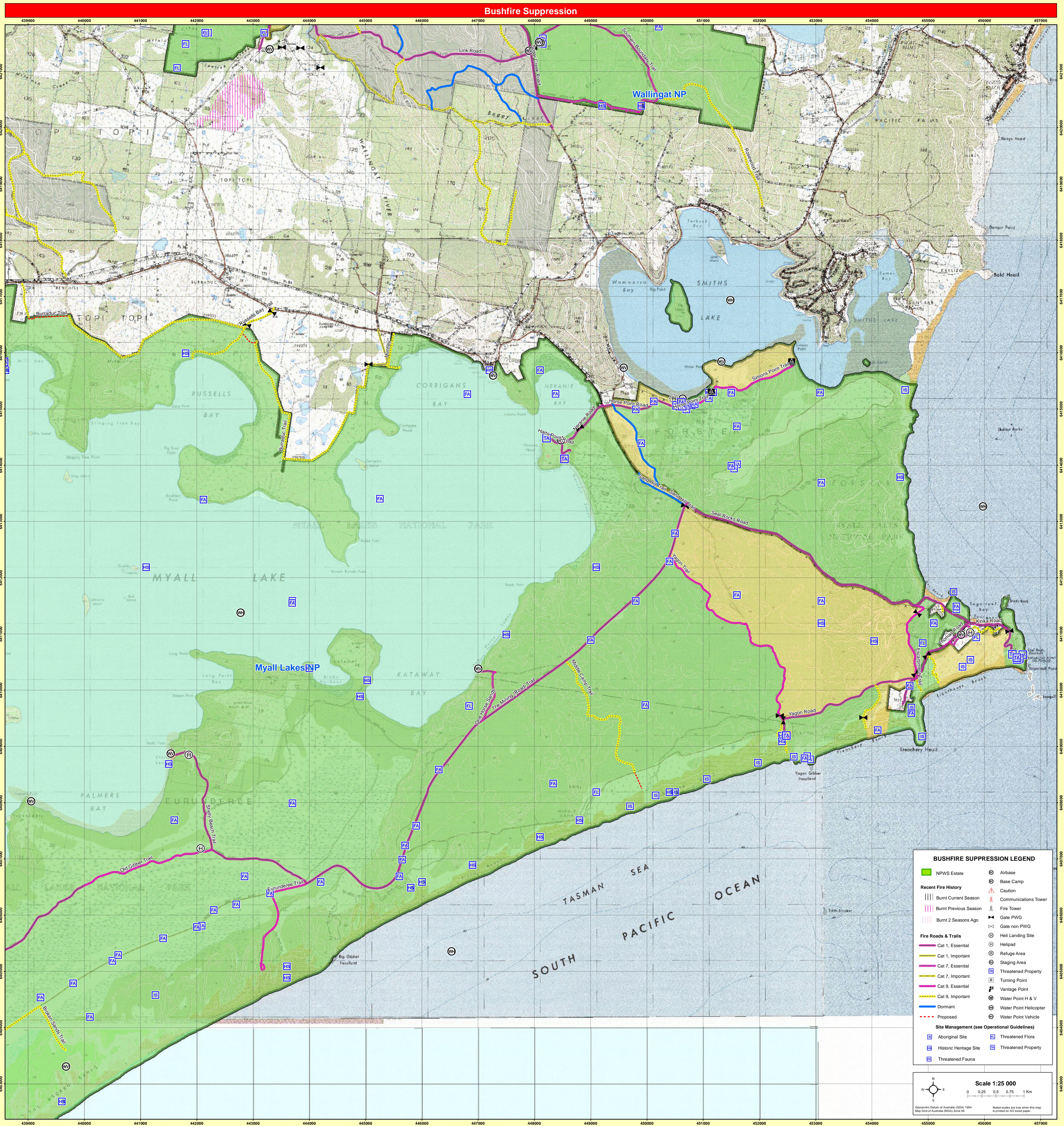
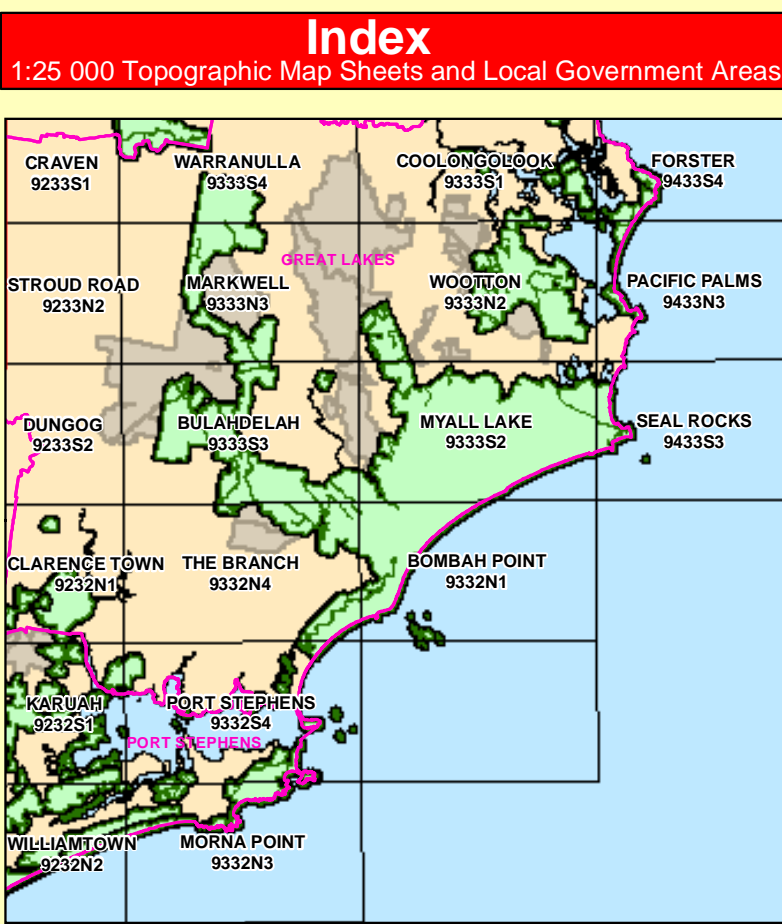
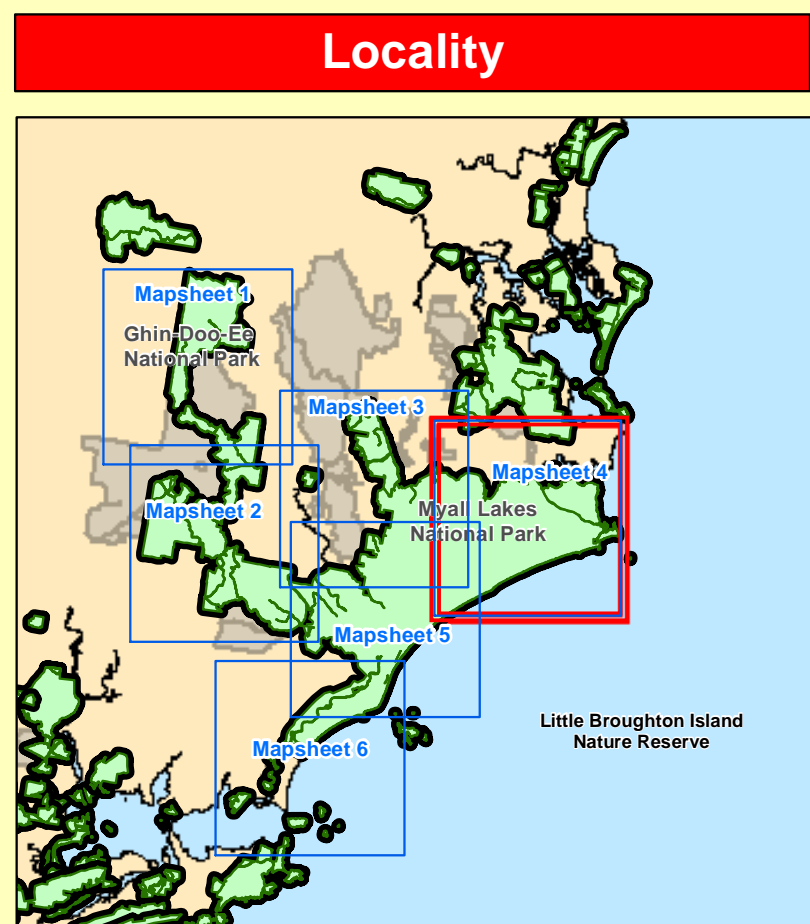
**Lower North Coast Region  
Myall Lakes  
National Park  
Fire Management Strategy (Type 2)  
2014 - Sheet 4 of 6**



This strategy should be used in conjunction with aerial photography and field reconnaissance during incidents and the development of incident action plans. These data are not guaranteed to be free from error or omission. The NSW National Parks and Wildlife and its employees disclaim liability for any act done on the information in this data and any consequences of such acts or omissions. This document is copyright. Apart from any use permitted for the purpose of study, research, criticism or review, as permitted under the Copyright Act, no part may be reproduced by any process without written permission. The NSW National Parks and Wildlife Service is part of the Office of Environment and Heritage. Published by the Office of Environment and Heritage (NSW), March 2014. Contact: NSW National Parks and Wildlife Service, Lower North Coast Region, Locked Bag 99, Nelson Bay Delivery Centre, NSW 2315. ISBN: 978 1 74359 839 9 DEC Number: 2014/0039 Last Updated: 23/06/2014

Office of Environment and Heritage (NSW) This strategy is a relevant Plan under Section 38 (4) and Section 44 (3) of Rural Fires Act 1997.

Endorsed by: \_\_\_\_\_ Date: \_\_\_\_/\_\_\_\_/\_\_\_\_  
Director Coastal, Parks & Wildlife Division



**BUSHFIRE SUPPRESSION LEGEND**

NPWS Estate	Airbase
Recent Fire History	Base Camp
Burnt Current Season	Caution
Burnt Previous Season	Communications Tower
Burnt 2 Seasons Ago	Fire Tower
Fire Roads & Trails	Gate non PWG
Cat 1, Essential	Gate PWG
Cat 1, Important	Helipad
Cat 7, Essential	Hel Landing Site
Cat 7, Important	Refuge Area
Cat 9, Essential	Staging Area
Cat 9, Important	Threatened Property
Dominant	Turning Point
Proposed	Vantage Point
	Water Point H & V
	Water Point Helicopter
	Water Point Vehicle
	Threatened Flora
	Threatened Fauna

Scale 1:25 000

