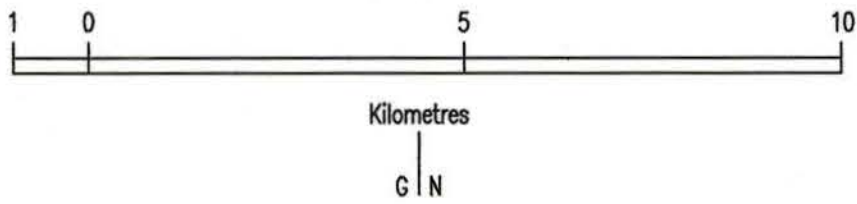


The Department of Land and Water Conservation incorporates the former
Departments of Conservation and Land Management and Water Resources

Department of Conservation
and Land Management

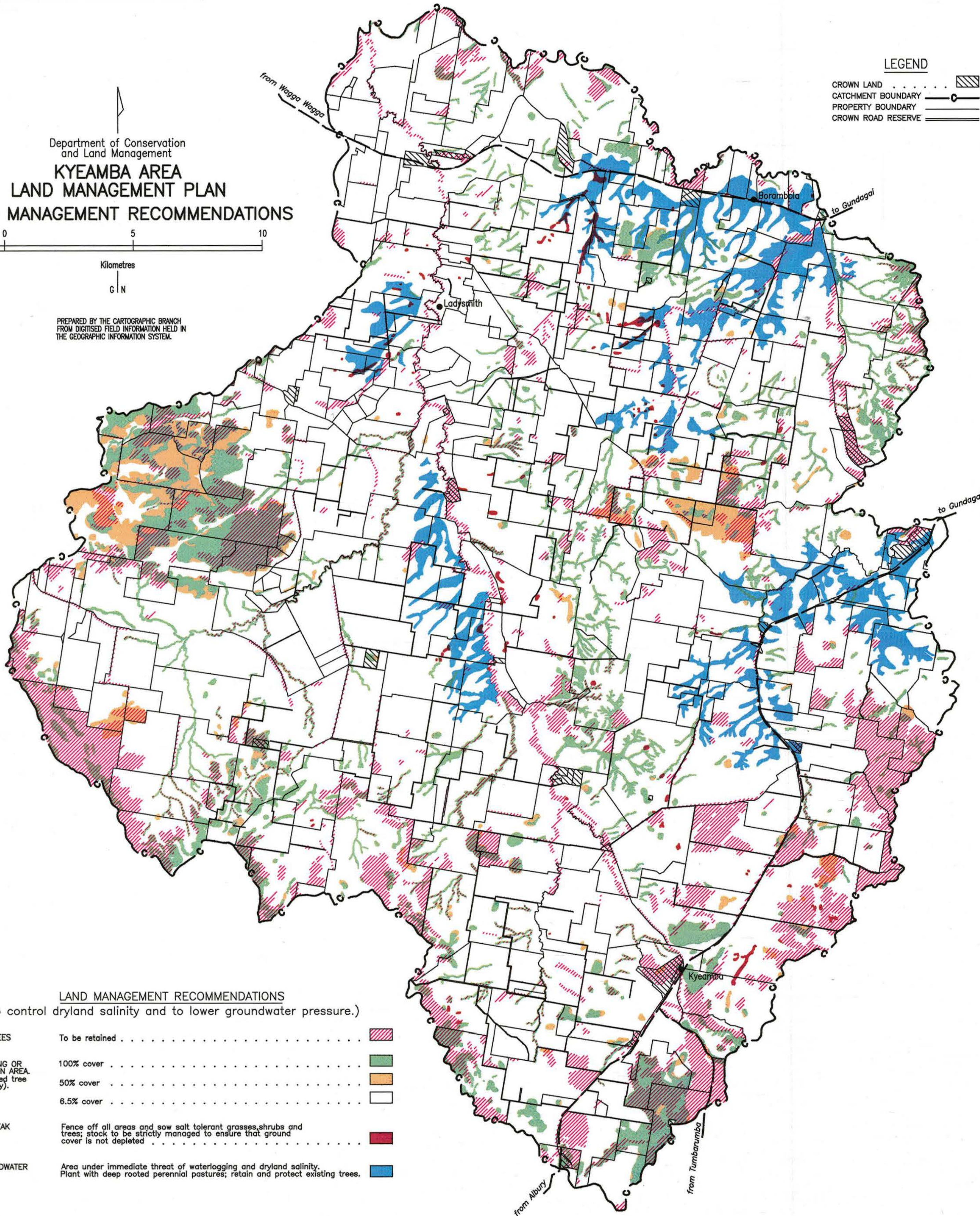
**KYEAMBA AREA
LAND MANAGEMENT PLAN
LAND MANAGEMENT RECOMMENDATIONS**



PREPARED BY THE CARTOGRAPHIC BRANCH
FROM DIGITISED FIELD INFORMATION HELD IN
THE GEOGRAPHIC INFORMATION SYSTEM.

LEGEND

- CROWN LAND
- CATCHMENT BOUNDARY
- PROPERTY BOUNDARY
- CROWN ROAD RESERVE



LAND MANAGEMENT RECOMMENDATIONS

(To control dryland salinity and to lower groundwater pressure.)

- EXISTING TREES To be retained
- TREE PLANTING OR REGENERATION AREA (Recommended tree cover density):
 - 100% cover
 - 50% cover
 - 6.5% cover
- SALT OUTBREAK Fence off all areas and sow salt tolerant grasses, shrubs and trees; stock to be strictly managed to ensure that ground cover is not depleted
- HIGH GROUNDWATER PRESSURE. Area under immediate threat of waterlogging and dryland salinity. Plant with deep rooted perennial pastures; retain and protect existing trees.