

### Hunter Region Copeland Tops State Conservation Area Fire Management Strategy (Type 2) 2005 Sheet 1 of 1

This strategy should be used in conjunction with aerial photography and field reconnaissance during incidents and the development of incident action plans.

These data are not guaranteed to be free from error or omission. The NSW National Parks and Wildlife Service and its employees disclaim liability for any loss or damage to any person or property that may arise from the use of this information in any way other than for the purposes for which it was provided.

This document is copyright. Apart from any fair dealing for the purpose of study, research, criticism or review, as permitted under the Copyright Act, no part may be reproduced by any process without written permission.

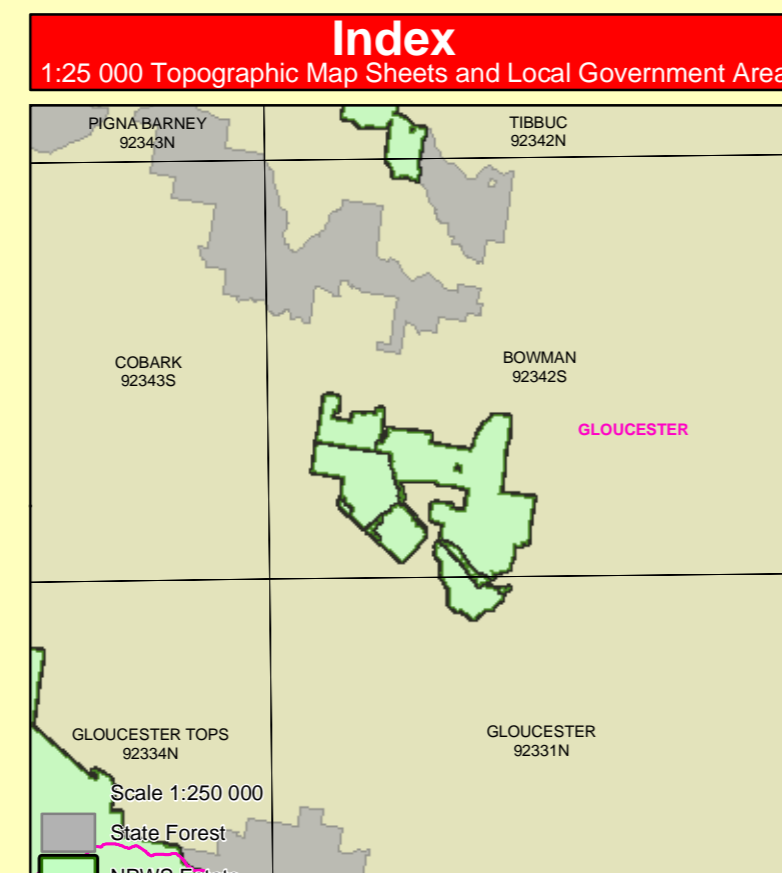
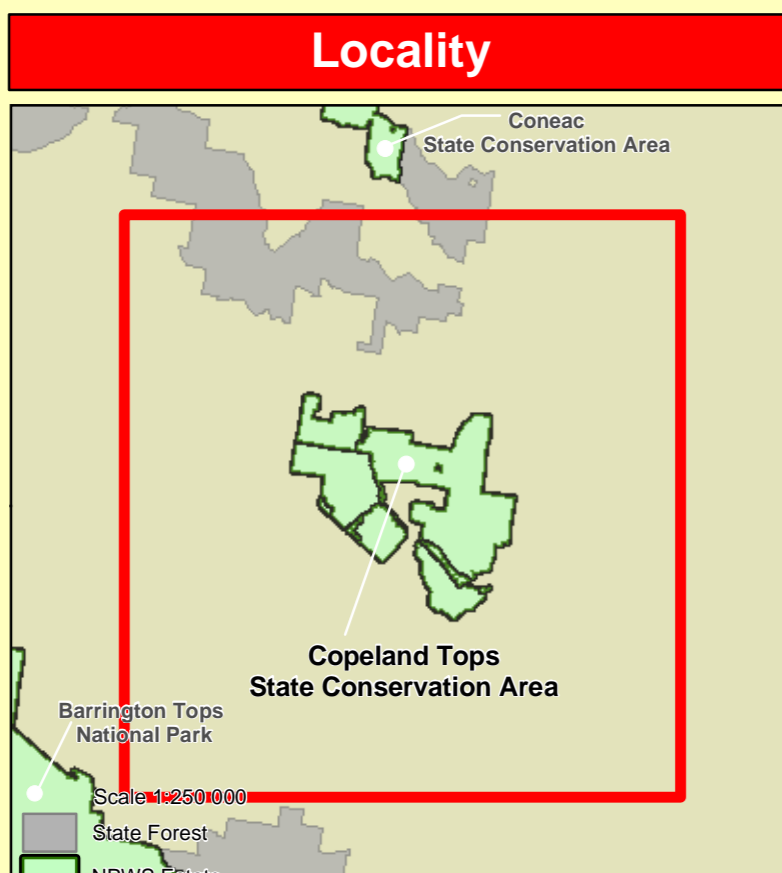
The NSW National Parks and Wildlife Service is part of the Department of Environment and Conservation.

Published by the Department of Environment and Conservation (NSW), June 2006.  
Contact: NSW National Parks and Wildlife Service, Hunter Region, Locked Box 99, Nelson Bay, NSW 2315.  
ISBN: 1 74137 968 2 DEC Number: 2006/373 Last Updated: 21/06/06

This strategy is a relevant plan under Section 38 (4) and Section 44 (3) of Rural Fires Act 1997.

Department of Environment and Conservation (NSW)

Approved Date: 30<sup>th</sup> June 2006



### Contact Information

Agency	Position/Location	Phone
NPWS	Regional Day Officer	016 501 161 / 0429 144 880
	Business Area Manager	016 501 160 / 0429 144 873
	Fire Management Officer	0494 8212 / 0429 144 870
	Regional Operations Coordinator	0494 8212 / 0429 144 872
	Barrington Area Office	016 501 160 / 0429 144 876
	Regional Office	0494 8200 / 0429 144 871
RFS - Manning Team	Fire Control Centre Gloucester District	0658 9222 / 0658 1723
	24 Hour Day Officer	0658 9222
	Fire Control Centre - Tare District	0658 9200 / 0658 9970
	24 Hour Day Officer	0658 9200
	State Operations	016 501 160 / 0429 144 870
NSW Fire Brigade	Emergency	000
	Newcastle Communications (24hr)	0658 1177 / 0429 144 870
SES	Emergency	000
	24hr	132 500
	Gloucester Unit	016 501 160 / 0429 144 876
Police	Emergency	000
	Gloucester Station	0658 1204
Ambulance	Emergency	000
	Bookings	131 253
Hospital	Gloucester	0658 1307
DOP	Newcastle	0492 4346 / 0429 4364
DPI - Forests	Hunter Region Office	0493 6666 / 0429 433 0772
	Gloucester Site	016 501 160 / 0429 144 876
Council	Lower Local Aboriginal Land Council/Rock Valley	0658 5411 / 0429 5532

### Operational Guidelines (continued)

Refer to Strategy for Fire Management 2003 and Fire Management Manual 2004. Brief all personnel involved in suppression operations on the following issues.

Resource	Guidelines
A2	As far as possible protect site from fire.
A3	Avoid ground disturbance including handbush, stumps, and avoid water banking which may cause ground disturbance. Avoid ground disturbance including handbush, stumps, and avoid water banking which may cause ground disturbance. Site may be burnt by wildfire, backburn, prescribed burn.
Hunter Heritage Management (NPWS FMM 4.12)	<ul style="list-style-type: none"> <li>High RCHMS<sup>1</sup> priority.</li> <li>Avoid fire, including wildfire, backburning &amp; HR.</li> <li>Avoid all water banking activities.</li> </ul>
HS1	High RCHMS <sup>1</sup> priority.
HS2	High RCHMS <sup>1</sup> priority.
HS3	High or low RCHMS <sup>1</sup> priority.
HS4	High or low RCHMS <sup>1</sup> priority.
HS5	Low RCHMS <sup>1</sup> priority.
HS6	High or low RCHMS <sup>1</sup> priority.
HS7	High or low RCHMS <sup>1</sup> priority.

### Operational Guidelines (continued)

Refer to Strategy for Fire Management 2003 and Fire Management Manual 2004. Brief all personnel involved in suppression operations on the following issues.

Resource	Guidelines
FA1	Protect large and hollow bearing trees.
FA2	Protect large and hollow bearing trees.
FA3	Avoid interference intervals of < 10 yrs.
FA4	Avoid interference intervals of < 10 yrs.
FA5	Habitat suitability to be effected by fire.
FA6	Avoid use of earth moving machinery in wetland habitats.
FA7	Avoid high intensity fires that consume tree canopies and fall logs.
FA8	Avoid fire, including wildfire, backburning & HR, as far as possible.
Threatened Flora Management (NPWS FMM 4.12)	<ul style="list-style-type: none"> <li>Avoid interference intervals of &lt; 10 yrs.</li> <li>Avoid the use of machinery.</li> <li>Avoid fire, including wildfire, backburning &amp; HR, as far as possible.</li> <li>Avoid the use of earth moving machinery.</li> </ul>
FL1	Avoid interference intervals of < 10 yrs.
FL2	Avoid interference intervals of < 10 yrs.
FL3	Avoid interference intervals of < 10 yrs.
FL4	Avoid interference intervals of < 10 yrs.
FL5	Avoid interference intervals of < 10 yrs.
Threatened Property	Where possible, property owners with assets at risk from a wildfire event should be kept informed regarding the progress of the fire, and asked for an assessment of their current level of asset protection.
General	<ul style="list-style-type: none"> <li>The first on-site agency on site may assume control of the fire, but then must ensure the relevant land management agency is notified immediately.</li> <li>On the arrival of other relevant agencies, the initial incident commander will consult with the ongoing command, control and coordination officer regarding requirements as per the Gloucester BEMC Plan of Operations.</li> <li>The ICS system will be implemented for all fire suppression activities.</li> </ul>
Command & Control (NPWS FMM 4.2)	<ul style="list-style-type: none"> <li>As far as possible protect site from fire.</li> <li>Do not cut down trees.</li> <li>Use of fumes, warning agents &amp; retardant is acceptable.</li> <li>Take care around any acid trees.</li> </ul>
Rehabilitation (NPWS FMM 5.1)	All new containment lines should be stabilised and rehabilitated as part of the wildfire suppression operation.

### Strategy Information

#### Wildfires

Have been known to start as early as late August, but usually the potential for a large fire event is greatest between September and December. This period may extend into February in some years.

#### Prescribed Burning (NPWS Fire Management Manual 4.7)

General season is Autumn to late Winter. Burning is possible in early Spring but not desirable on a regular basis from an ecological or tourism point of view.

#### Suppression Strategies

Current FDR	Forecast FDR	Strategy
Low - Mod	Low - Mod	Understand direct, parallel or indirect attack along existing containment lines and take advantage of natural fire control advantages (NFA). Where practicable consider maintaining the fire area in accordance with the requirements of any prescribed burning.
Low - Mod	> High	In order to maintain the fire area and secure the flanks as soon as possible, undertake direct, parallel or indirect attack along the closest containment lines. Pay particular attention to the flank on the next predicted downwind side of the fire. If applicable consider broadening the normal containment strategies to avoid wasted effort and high risk of failure.
High	All	Understand indirect attack along existing or newly constructed containment lines. Secure and deepen containment lines along the next predicted downwind side of the fire. If applicable consider broadening the normal containment strategies to avoid wasted effort and high risk of failure.
All	All	Ensure there is sufficient time to secure containment lines prior to the fire impacting upon those, otherwise fall back to the next potential line. As far as possible, implement threatened species and cultural heritage management guidelines. Note NFA before setting on fire.

#### Operational Guidelines

Refer to Strategy for Fire Management 2003 and Fire Management Manual 2004. Brief all personnel involved in suppression operations on the following issues.

Resource	Guidelines
Operational Cultural Heritage Site Management (NPWS FMM 4.11)	<ul style="list-style-type: none"> <li>As far as possible protect site from fire.</li> <li>Do not cut down trees.</li> <li>Use of fumes, warning agents &amp; retardant is acceptable.</li> <li>Take care around any acid trees.</li> </ul>

### Operational Guidelines (continued)

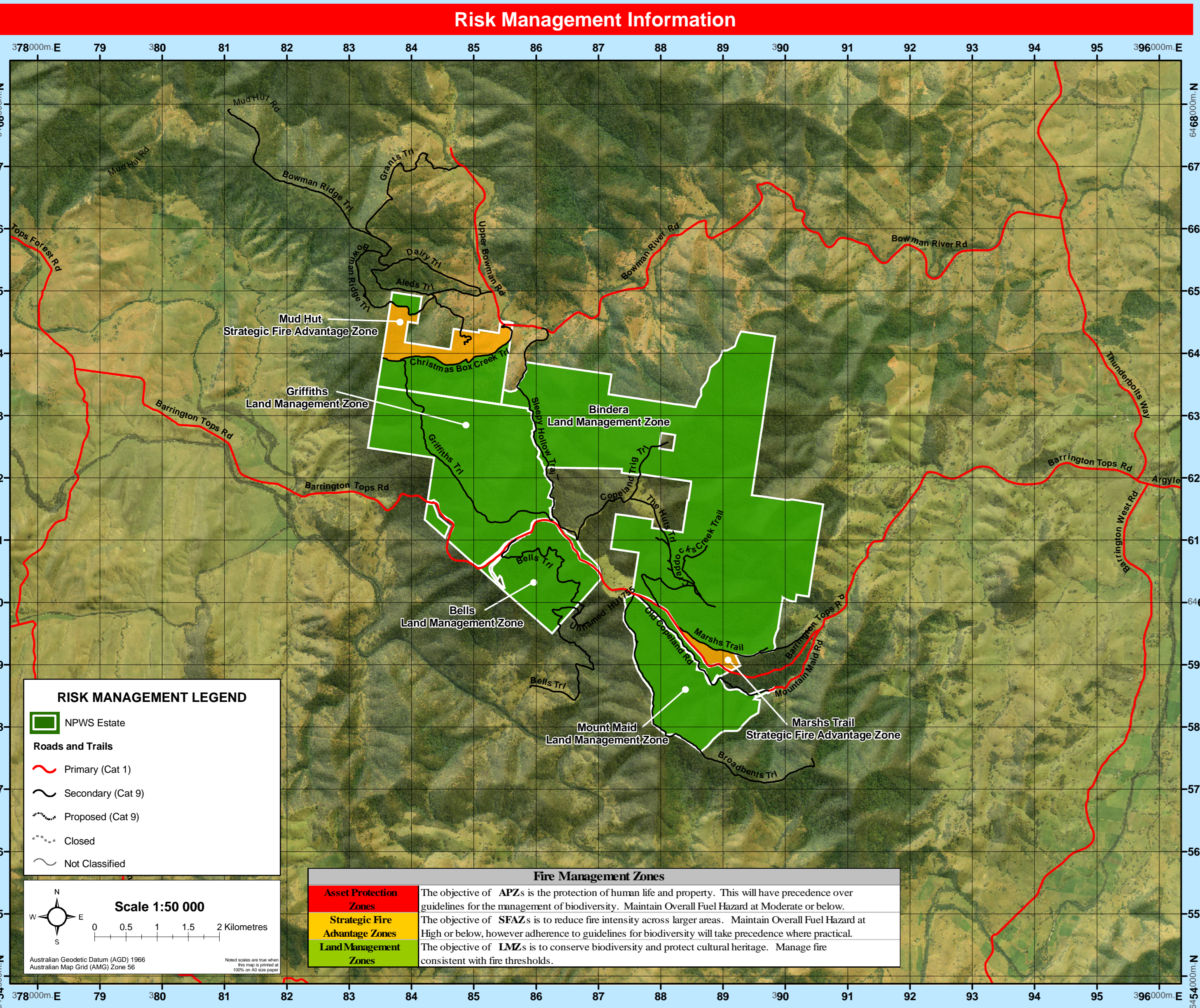
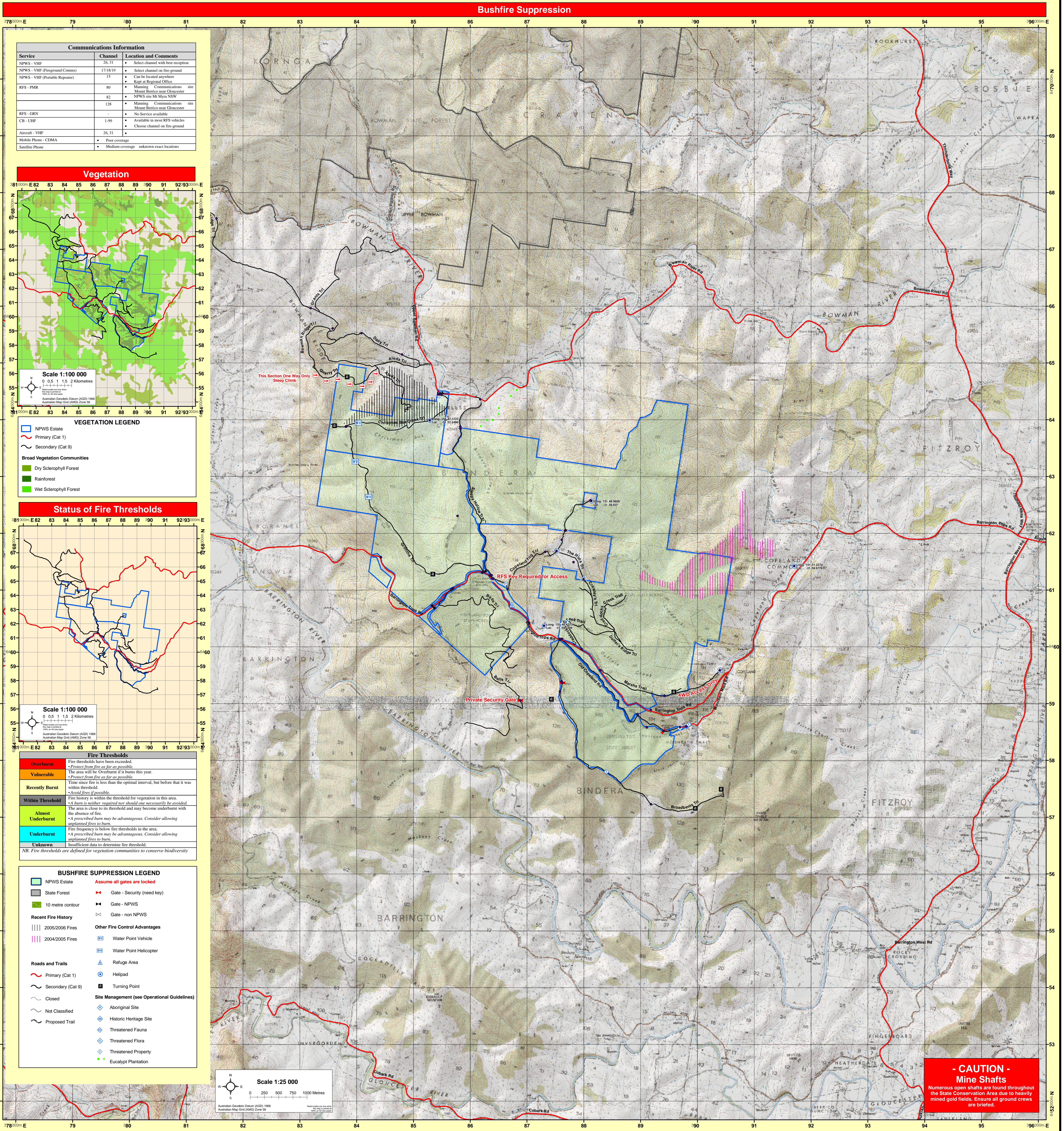
Refer to Strategy for Fire Management 2003 and Fire Management Manual 2004. Brief all personnel involved in suppression operations on the following issues.

Resource	Guidelines
Operational Cultural Heritage Site Management (NPWS FMM 4.11)	<ul style="list-style-type: none"> <li>As far as possible protect site from fire.</li> <li>Do not cut down trees.</li> <li>Use of fumes, warning agents &amp; retardant is acceptable.</li> <li>Take care around any acid trees.</li> </ul>

### Operational Guidelines (continued)

Refer to Strategy for Fire Management 2003 and Fire Management Manual 2004. Brief all personnel involved in suppression operations on the following issues.

Resource	Guidelines
Operational Cultural Heritage Site Management (NPWS FMM 4.11)	<ul style="list-style-type: none"> <li>As far as possible protect site from fire.</li> <li>Do not cut down trees.</li> <li>Use of fumes, warning agents &amp; retardant is acceptable.</li> <li>Take care around any acid trees.</li> </ul>



**- CAUTION -  
Mine Shafts**

Numerous open shafts are found throughout the State Conservation Area due to heavily mined gold fields. Ensure all ground crews are briefed.