



NSW NATIONAL PARKS & WILDLIFE SERVICE

Bents Basin State Conservation Area

Draft Visitor facilities concept plans



© 2020 State of NSW and Department of Planning, Industry and Environment

With the exception of photographs, the State of NSW and Department of Planning, Industry and Environment are pleased to allow this material to be reproduced in whole or in part for educational and non-commercial use, provided the meaning is unchanged and its source, publisher and authorship are acknowledged. Specific permission is required for the reproduction of photographs.

The Department of Planning, Industry and Environment (DPIE) has compiled this report in good faith, exercising all due care and attention. No representation is made about the accuracy, completeness or suitability of the information in this publication for any particular purpose. DPIE shall not be liable for any damage which may occur to any person or organisation taking action or not on the basis of this publication. Readers should seek appropriate advice when applying the information to their specific needs.

All content in this publication is owned by DPIE and is protected by Crown Copyright, unless credited otherwise. It is licensed under the [Creative Commons Attribution 4.0 International \(CC BY 4.0\)](#), subject to the exemptions contained in the licence. The legal code for the licence is available at [Creative Commons](#).

DPIE asserts the right to be attributed as author of the original material in the following manner: © State of New South Wales and Department of Planning, Industry and Environment 2020.

Cover photo: Bents Basin State Conservation Area, Nepean River. Kevin McGrath/DPIE

Published by:

Environment, Energy and Science
Department of Planning, Industry and Environment
Locked Bag 5022, Parramatta NSW 2124
Phone: +61 2 9995 5000 (switchboard)
Phone: 1300 361 967 (Environment, Energy and Science enquiries)
TTY users: phone 133 677, then ask for 1300 361 967
Speak and listen users: phone 1300 555 727, then ask for 1300 361 967
Email: info@environment.nsw.gov.au
Website: www.environment.nsw.gov.au

Report pollution and environmental incidents
Environment Line: 131 555 (NSW only) or info@environment.nsw.gov.au
See also www.environment.nsw.gov.au

ISBN 978-1-922318-64-0
EES 2020/0131
September 2020

Find out more about your environment at:

www.environment.nsw.gov.au

Contents

Introduction	5
Visitor facility designs	5
Concept plans	6

List of tables

Table 1	Staging of visitor facility upgrades	6
Table 2	Concept plans	6

Introduction

The National Parks and Wildlife Service recognise that the visitor facilities at Bents Basin State Conservation Area need revitalising to protect park values and deliver sustainable visitor use.

We are mindful of increasing pressures on the parks from the projected population growth in western Sydney and the growing popularity of the park.

Existing facilities and infrastructure need to be updated to meet future demand and continue to deliver rewarding visitor experiences.

The Department commissioned Environmental Partnership's landscape consultancy services to prepare a long-term visitor facility plan to help achieve this aim.

The visitor facility plan provides strategic direction, objectives and actions to achieve a vision for upgrading park facilities and infrastructure in a staged approach as funding becomes available (See Table 1).

Visitor facility designs

These concept designs highlight potential locations for future pedestrian cycle and vehicular access, parking, services and utilities, site drainage, vegetation management, recreational spaces for visitor use, visitor facilities, interpretive opportunities, and wayfinding opportunities within the park.

The concept designs also highlight potential locations for self-contained cabin accommodation and tent glamping options which will be subject to an assessment of demand and business planning for commercial leasing options.

New facilities have been designed to fit on or adjoin the footprint of existing facilities to avoid unnecessary clearing of vegetation and ensure that the values of the park are protected.

This approach will also ensure that a high level of service continues to be provided for visitors with minimal disruption.

The visitor facility plan will be implemented subject to heritage, environment and sustainability assessments, and will remain consistent with the plan of management objectives.

Table 1 Staging of visitor facility upgrades

Stage	Concept	Priorities
1	Vegetation management	<ul style="list-style-type: none"> • Revegetation of riverbanks • Planting of native shade trees in campground and picnic areas • Planting of native shade trees in new car parks
2	Parking	<ul style="list-style-type: none"> • Bents Basin Road overflow car park • Installation of loading and unloading zones • Formalising overflow parking in Durawi picnic area
3	Site drainage	<ul style="list-style-type: none"> • Retaining walls • Drains
4	Visitor facilities, services and utilities	<ul style="list-style-type: none"> • Upgrading amenities • Install new picnic shelters • Install new BBQ facilities • Connect new facilities to the grid and water utilities
5	Access, recreational spaces for visitor use	<ul style="list-style-type: none"> • New camping areas • Bicycle trails in Tara block • New walking trails in Tara block
6	Interpretive opportunities, wayfinding opportunities	<ul style="list-style-type: none"> • New interpretive signage • Educational tours • Wayfinding signage
7	New camping and accommodation options	<ul style="list-style-type: none"> • Installation of self-contained cabin accommodation and tent glamping options (subject to demand and business planning)

Concept plans

The following concept plans include designs for these locations.

Table 2 Concept plans

Location	Concept plan title
Site plan	Overview map
Park entry	Concept Area 1
Bents Basin Dam	Concept Area 2
Overflow parking	Concept Area 2.5
Durawi picnic area	Concept Area 3
Bents Basin Nepean River outlet	Concept Area 4
Bents Basin picnic area	Concept Area 5
Bents Basin Road car park	Concept Area 6
Bents Basin Campground	Concept Area 7
Temporary overflow parking and glamping options	Concept Area 7.5
Newly acquired Tara block additions	Concept Area 8



NOTE: AERIAL WITH CADASTRAL INFORMATION SOURCED FROM MAPS SIX NSW GOVT.

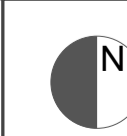
PREPARED BY
ep environmental partnership

Prepared for NSW National Parks and Wildlife Service
 CLIENT
 DISCLAIMER:
 This concept plan was prepared by Environmental Partnership for NSW National Parks & Wildlife Service in good faith exercising all due care, but no representation is made as to the accuracy or completeness for purpose of this document. This document may not represent Department of Planning and Environment policy. Base information contained on these plans is from various sources and time periods and is to the best of our knowledge.

Site Plan - Overview Map

REV	DATE	DESCRIPTION	EP	AM
1	Aug 2020	Issued for Information and Review	EP	AM
			DRAWN	CHECKED

PROJECT
Bents Basin SCA
 visitor facility upgrades



SCALE
 n.t.s @ A1
 n.t.s @ A3

DATE
 AUG 2020

DRAWING
3121.L01
 ISSUE
 1



Key - area 1

- 1** Existing entry sign wall oriented to direction of approaching vehicles
- 2** Native vegetation along entry road
- enhance sense of arrival
- screen rangers cottage
- 3** Information Bay & Accessible access to building
- skillion information shelter
- formalise accessible parking space and concrete footpath access to visitor building
- cycle parking area
- 4** Garden area to slope with retaining edge
- 5** Access path with views over landscape outside building
- 6** Existing short term parking, PUF machine and stone retaining wall to remain. Improve visibility/ position of Information signage for 'pay and park' bays and PUF machine location
- 7** Remove koppers log retaining walls and renew stepped access from roadway. Provide low growing native shrubs & ground covers to embankments
- 8** Tree and groundcovers planted bank to provide buffer between road and building
- 9** New staff outdoor area
- 10** Directional sign to Visitor Information Centre
- 11** Directional sign to campground and day use areas
- 12** 150mm raised threshold to Engineers details
- 13** Path / cycleway to campground and Basin
- 14** Settling pond has been removed
- 15** Existing location of fire danger sign
- 16** Realign corner to allow for RV's, caravans buses. Replace trees removed with new planting
- 17** Helicopter landing zone. Location indicative and subject to appropriate safety clearances and surface requirements.

Legend - area 1

- Existing contours
- Existing trees
- Proposed trees
- Skillion information shelter
- Cable vehicle barrier
- Road pavement
- Concrete pavement
- Cement stabilised crushed sandstone pathway
- Mass planting bed
- Turfed area
- Vehicle gate
- Retaining wall
- Bollards
- Bicycle racks
- Park user fee (PUF) machine
- Signage
- Accessible car park space
- Indicative Flood line Level (1983 survey RL 45.79)



EXISTING DAM

Key - area 2

- 1** Carpark
 - formalize existing carpark
 - 6 No. 90° angle parking spaces
 - provide adequate room behind cars to load/unload car boot without stepping onto road
 - additional tree planting for shade and amenity
- 2** Bookable double skillion standard shelter
 - double skillion shelter with water tank
 - two banquet tables
 - seating wall to rear of shelter
 - concrete pavement
- 3** Skillion BBQ shelter
 - separate location to picnic shelter provides more generous space and functionality
 - double plate electric barbeque
 - concrete pavement
 - provision for power and water
- 3a** Skillion BBQ shelter
 - double plate electric barbeque
 - extended concrete pavement for coal BBQ cooking area and coal disposal bin
 - provision for power and water
- 4** Proposed recycled plastic deck / ramp
 - combined Kayak boat ramp and stepped deck platform with ramp down to floating pontoon
 - provide lookout area and seating
- 5** Existing decks have been removed
- 6** Bookable standard skillion shelter with banquet table
- 7** Coach turning circle
- 8** Coach parking (2 buses)
- 9** Upgrade of overflow carpark
 - dual roadway loop access
 - 30 spaces
 - PUF machine
- 10** Recycled plastic deck to water edge
- 11** Possible self contained cabins (Glamping)
- 12** Access track to Basin and campground
- 13** Overflow parking
- 14** Entry point to include regulation signage
- 15** Shared pathway linking campground to Durawi
- 16** Lockable Access gate

Legend - area 2

- Existing contours
- Existing trees
- Existing vegetation canopy
- Proposed trees
- Double skillion standard shelter with banquet tables
- Skillion barbecue shelter
- Skillion barbecue shelter with extended concrete pad for coal BBQs & coal bin
- Rainwater tank
- Cable vehicle barrier
- Road pavement
- Concrete pavement
- Cement stabilised crushed sandstone pathway
- Mass planting bed
- Turfed area
- Vehicle gate
- Banquet table on concrete slab
- Bollards
- Timber deck to water edge
- Park user fee (PUF) machine
- Retaining wall
- Rubbish bin - (Skip bin)
- Existing Shelter
- Indicative Flood line Level (1983 survey RL 45.79)

Notes:

1. All furniture facilities to be installed with quick release fixings (as per Cattai NP) within 1 in 100 flood line.
2. All shelters are to be constructed from steel due to termites.

Showing 23 Oct 2011

PREPARED BY
ep environmental partnership

Prepared for NSW National Parks and Wildlife Service
CLIENT
DISCLAIMER:
This concept plan was prepared by Environmental Partnership for NSW National Parks & Wildlife Service in good faith exercising all due care, but no representation, is made as to the accuracy or completeness for purpose of this document. This document may not represent Department of Planning and Environment policy. Base information contained on these plans is from various sources and time periods and is to the best of our knowledge.

TITLE
Concept Area 2 - Bents Basin Dam

REV	DATE	DESCRIPTION	EP	AM
1	Aug 2020	Issued for Information and Review	EP	AM
			DRAWN	CHECKED

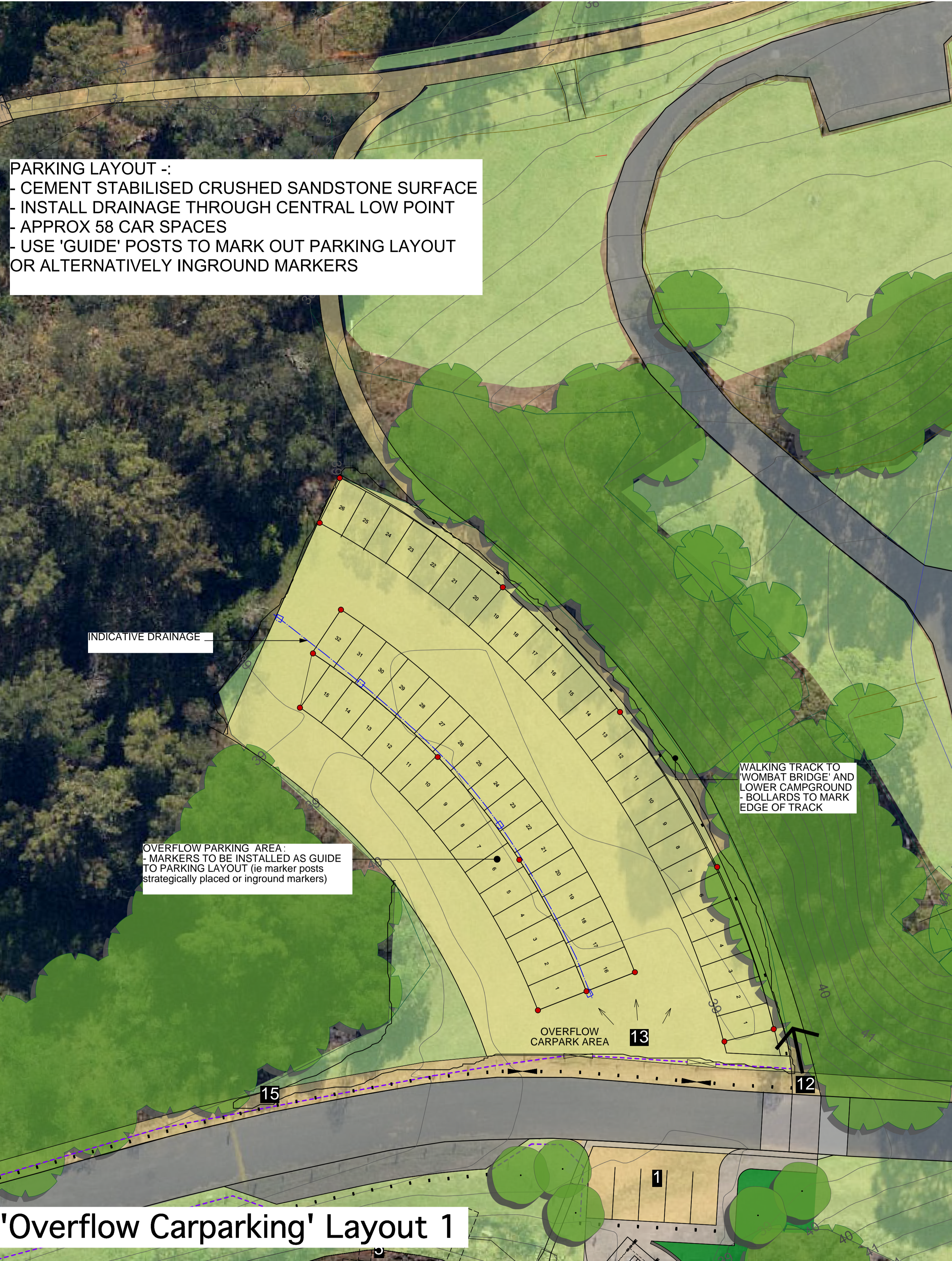
PROJECT
Bents Basin SCA
visitor facility upgrades

SCALE
1:250 @ A1
1:500 @ A3
0 5 10 M

DATE
AUG 2020

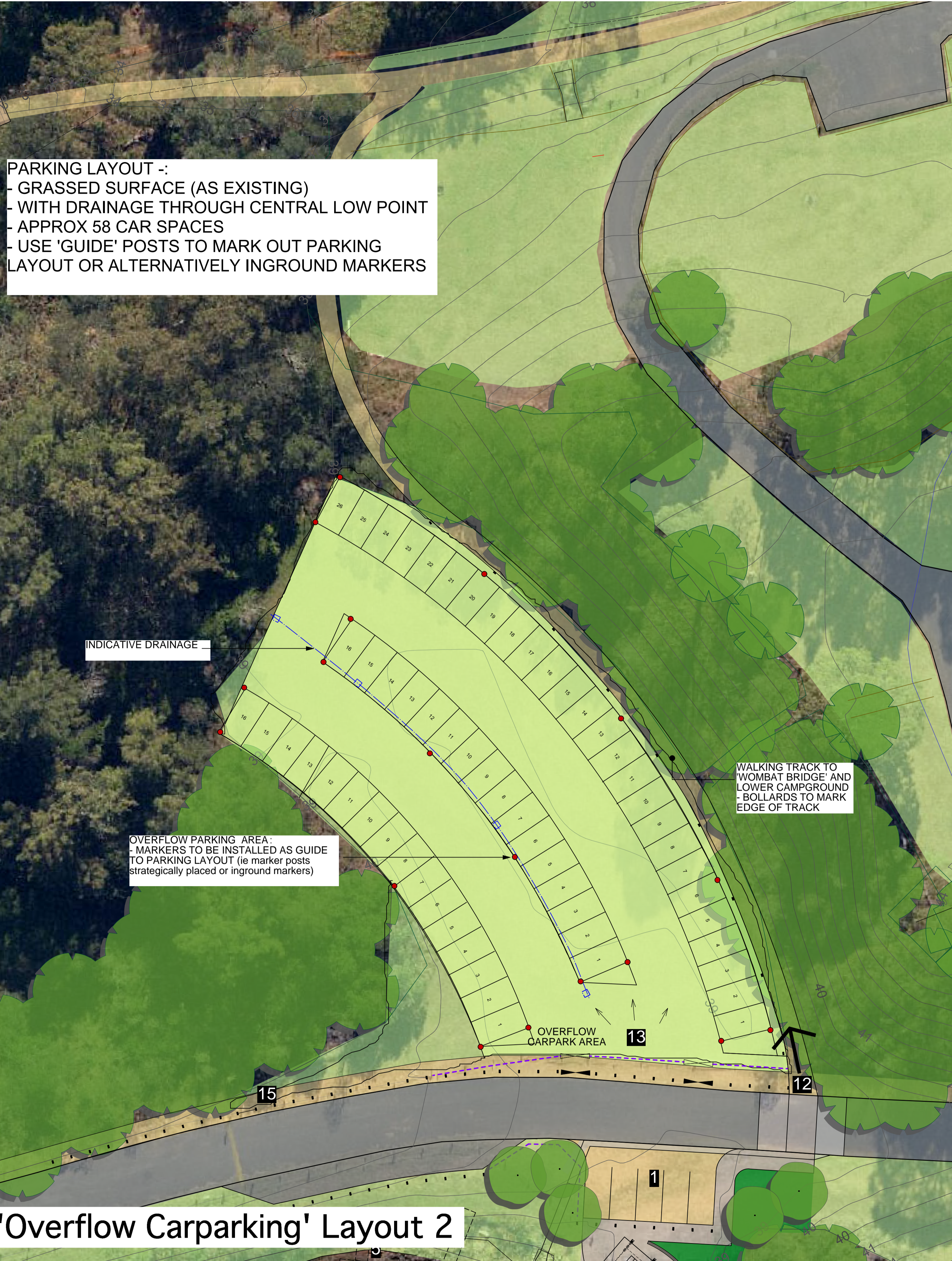
DRAWING
3121.CP02
ISSUE
1

PARKING LAYOUT -:
 - CEMENT STABILISED CRUSHED SANDSTONE SURFACE
 - INSTALL DRAINAGE THROUGH CENTRAL LOW POINT
 - APPROX 58 CAR SPACES
 - USE 'GUIDE' POSTS TO MARK OUT PARKING LAYOUT OR ALTERNATIVELY INGROUND MARKERS

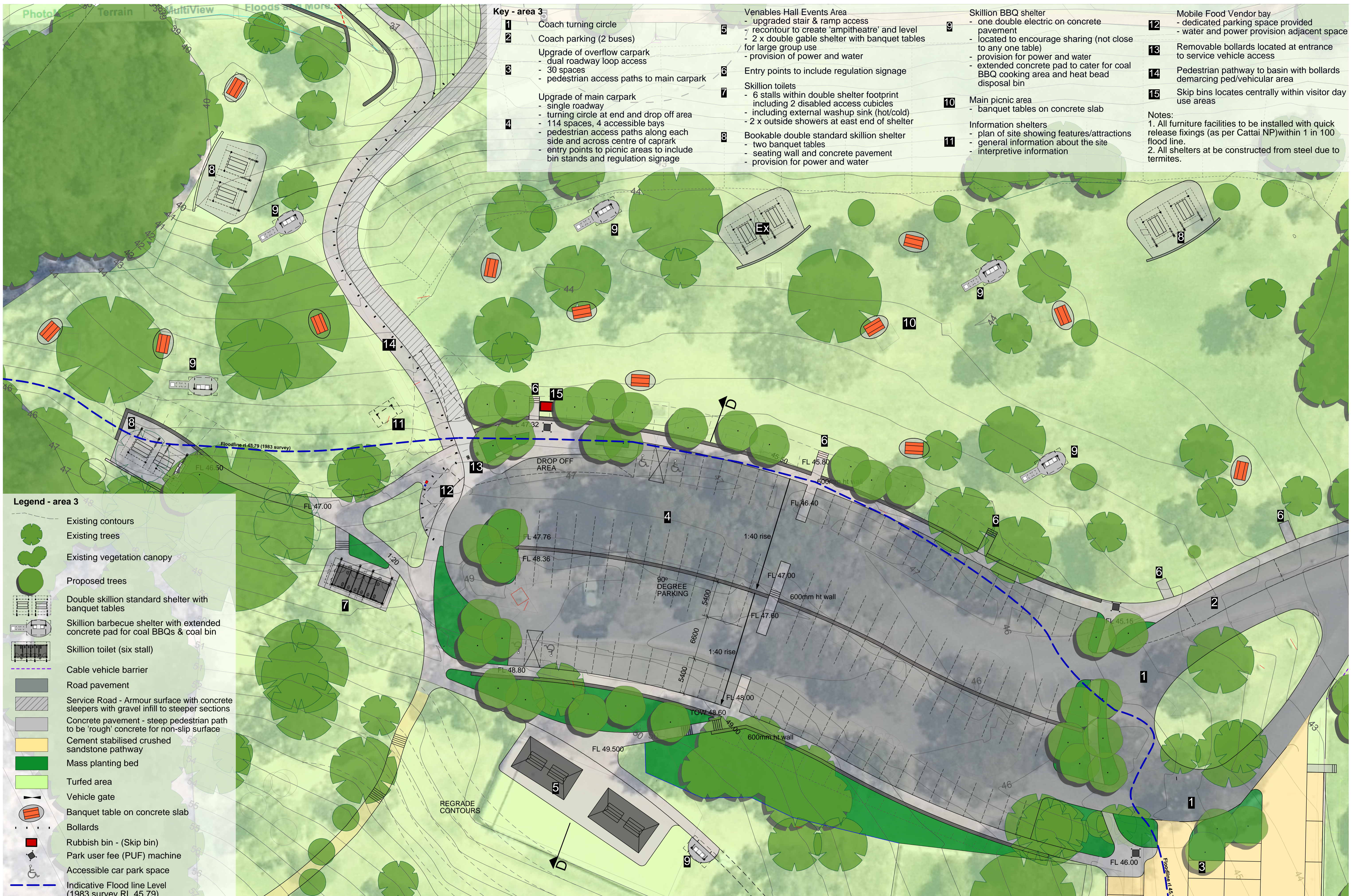


'Overflow Carparking' Layout 1

PARKING LAYOUT -:
 - GRASSED SURFACE (AS EXISTING)
 - WITH DRAINAGE THROUGH CENTRAL LOW POINT
 - APPROX 58 CAR SPACES
 - USE 'GUIDE' POSTS TO MARK OUT PARKING LAYOUT OR ALTERNATIVELY INGROUND MARKERS



'Overflow Carparking' Layout 2



- Key - area 3**
- 1 Coach turning circle
 - 2 Coach parking (2 buses)
 - 3 Upgrade of overflow carpark
 - dual roadway loop access
 - 30 spaces
 - pedestrian access paths to main carpark
 - 4 Upgrade of main carpark
 - single roadway
 - turning circle at end and drop off area
 - 114 spaces, 4 accessible bays
 - pedestrian access paths along each side and across centre of carpark
 - entry points to picnic areas to include bin stands and regulation signage

- 5 Venables Hall Events Area
 - upgraded stair & ramp access
 - recontour to create 'amphitheatre' and level
 - 2 x double gable shelter with banquet tables for large group use
 - provision of power and water
- 6 Entry points to include regulation signage
- 7 Skillion toilets
 - 6 stalls within double shelter footprint including 2 disabled access cubicles
 - including external washup sink (hot/cold)
 - 2 x outside showers at east end of shelter
- 8 Bookable double standard skillion shelter
 - two banquet tables
 - seating wall and concrete pavement
 - provision for power and water

- 9 Skillion BBQ shelter
 - one double electric on concrete pavement
 - located to encourage sharing (not close to any one table)
 - provision for power and water
 - extended concrete pad to cater for coal BBQ cooking area and heat bead disposal bin
- 10 Main picnic area
 - banquet tables on concrete slab
- 11 Information shelters
 - plan of site showing features/attractions
 - general information about the site
 - interpretive information

- 12 Mobile Food Vendor bay
 - dedicated parking space provided
 - water and power provision adjacent space
 - 13 Removable bollards located at entrance to service vehicle access
 - 14 Pedestrian pathway to basin with bollards demarcating ped/vehicular area
 - 15 Skip bins located centrally within visitor day use areas
- Notes:**
1. All furniture facilities to be installed with quick release fixings (as per Cattai NP) within 1 in 100 flood line.
 2. All shelters to be constructed from steel due to termites.

- Legend - area 3**
- Existing contours
 - Existing trees
 - Existing vegetation canopy
 - Proposed trees
 - Double skillion standard shelter with banquet tables
 - Skillion barbecue shelter with extended concrete pad for coal BBQs & coal bin
 - Skillion toilet (six stall)
 - Cable vehicle barrier
 - Road pavement
 - Service Road - Armour surface with concrete sleepers with gravel infill to steeper sections
 - Concrete pavement - steep pedestrian path to be 'rough' concrete for non-slip surface
 - Cement stabilised crushed sandstone pathway
 - Mass planting bed
 - Turfed area
 - Vehicle gate
 - Banquet table on concrete slab
 - Bollards
 - Rubbish bin - (Skip bin)
 - Park user fee (PUF) machine
 - Accessible car park space
 - Indicative Flood line Level (1983 survey RL 45.79)






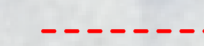
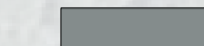
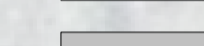

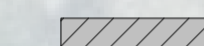
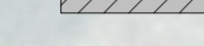
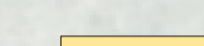




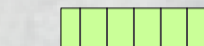
BENTS BASIN

Key - area 4

- 1** Existing service access to be removed and replaced / realigned with new sealed service access surface (resin bound pavement)
- 2** Stabilise eroded bank areas with 'Estero Grid Mats' (or similar), mulch and revegetate bank areas
- 3** Existing retaining walls
 - provide 500mm high 1:6 turf fill bank to bottom of sandstone walls to reduce height (< 1m)
 - remove steel handrails
 - design of graded turf fill areas may change pending further flood modelling advice
- 4** Turf make good to edge of new pedestrian access track. Stabilise with 'Estero grid mats' (or similar) beneath to protect heavy wear areas.
- 5** New gravel track access to campground
- 6** Provide regulation signage
- 7** Minor safety information sign
- 8** Proposed water level indicator
- 9** Reconstruct existing rock wall
- 10** Bents Basin existing track to be upgraded for return access to south end of basin, with provision of minor safety sign at 100 metre intervals nominally

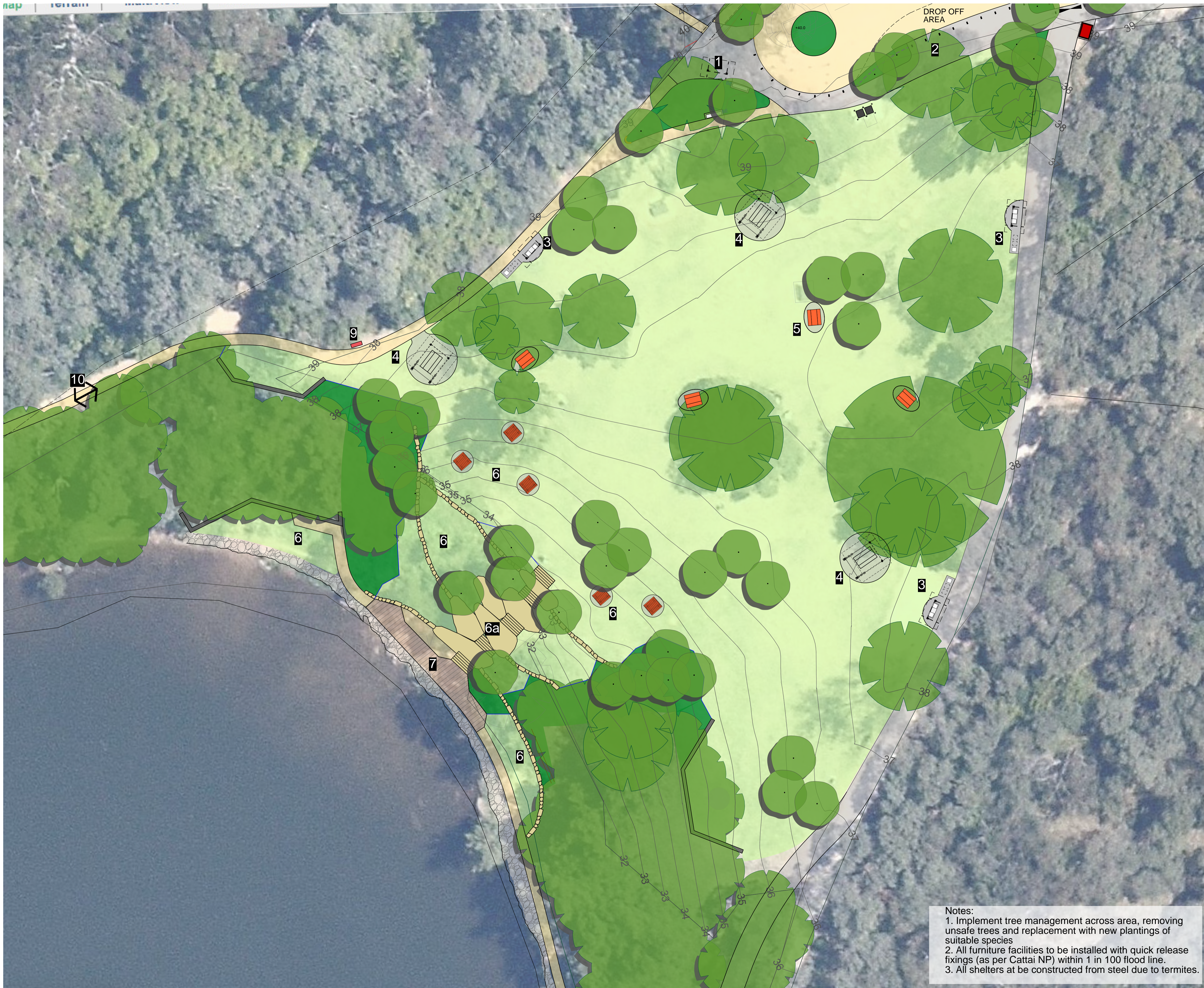
Notes:
 1. All furniture facilities to be installed with quick release fixings (as per Cattai NP)
 2. All shelters to be constructed from steel due to termites.

Legend - area 4

-  Existing contours
-  Existing trees
-  Existing vegetation canopy
-  Proposed trees
-  Existing terrace retaining wall
-  Remove existing steel balustrade
-  Road pavement
-  Concrete pavement
 - steep pedestrian path to be 'rough' concrete for non-slip surface
-  Service Road - Armour surface with concrete sleepers with gravel infill to steeper sections
-  Cement stabilised crushed sandstone pathway
-  Revegetation of eroded bank area - mass planting with 'Estero Grid mat' and mulch
-  Embankment stabilisation with 'Estero Grid mat' and mulch area
-  Embankment stabilisation with 'Estero Grid mat' and turf area
-  Turfed area
-  Banquet table on concrete slab
-  Warning sign
-  Indicative Flood line Level (1983 survey RL 45.79)



23 Oct 2011



Legend - area 5

- Existing contours
- Existing trees
- Existing vegetation canopy
- Proposed trees
- Bookable skillion standard shelter with banquet table
- Skillion barbecue shelter with extended concrete pad for coal BBQs & coal bin
- Skillion toilet (six stall)
- Terrace stone retaining walls
- Steel edge
- Concrete pavement
- Cement stabilised crushed sandstone pathway
- Mass planting bed
- Turfed area
- Banquet table on concrete slab
- Rubbish bin - (Skip bin)
- Warning sign
- Bollards
- Table seats
- Park user fee (PUF) machine
- Indicative Flood line Level (1983 survey RL 45.79)

Key - area 5

- 1** Entry to walking track
 - backed seat
 - bin enclosure and regulatory signage
 - skillion information shelter
- 2** PUF Machine
- 3** Skillion BBQ shelter
 - located to encourage sharing (not close to any one table)
 - one double electric bbq
 - on concrete pavement with extended concrete pad to cater for coal BBQ cooking area & heat bead disposal bin
 - provision for power and water
- 4** Skillion standard shelter
 - bookable standard skillion shelter
 - banquet table
 - concrete pavement
- 5** Ancillary picnic area
 - new banquet table on concrete slab
- 6** Lawn picnic terraces
 - formed with stone retaining walls located to the upper bank area (height 900mm to avoid requirement for a handrail). Walls subject to further flood modelling/hydraulic engineers advice.
 - gentle grade grass terrace
 - retain existing casuarinas
- 6a** Central Stepped access to terraces and basin - formed with stone slabs. Subject to hydraulic engineers advice.
- 7** Water edge zone
 - Proposed recycled plastic decking to walkway along water edge to protect high use areas
 - widened areas to be cement stabilised crushed sandstone pavement
 - stone retaining wall (height 900mm max.)
- 8** n/a
- 9** Minor safety information sign
- 10** Bents Basin existing track to be upgraded for return access to south end of basin, with provision of minor safety sign at 100 metre intervals nominally

Notes:
 1. Implement tree management across area, removing unsafe trees and replacement with new plantings of suitable species
 2. All furniture facilities to be installed with quick release fixings (as per Cattai NP) within 1 in 100 flood line.
 3. All shelters at be constructed from steel due to termites.



- Key - area 6**
- 1** New entry sign wall oriented to direction of approaching vehicles
 - NPWS sign manual standard design (Major Park Entry Sign)
 - stone base to match existing wall
 - automated access control gate (installed 2016)
 - 2** Existing entry road to carpark (16 spaces)
 - create a roadway with 90° angle parking one sides and buffer areas between parking bays
 - parking zone speed limit signage to be installed
 - 3** Ancillary carpark (63 spaces + 2 accessible)
 - remove central cable barrier
 - create a central roadway with 90° angle parking both sides & one way loop road to exit
 - provide pedestrian crossing to link with pedestrian path route to toilets
 - relocate fire safety sign
 - 4** Drop off zone
 - 5** Visitor Information Bay
 - double sided skillion information shelter
 - regulatory signage
 - concrete pavement
 - bench seats
 - 6** Existing toilets (recently installed)
 - 7** Future parking area - indicative layout
 - 8** Wheelchair accessible pathway from future carpark to Toilets. Provide a widened pathway to accommodate NPWS service vehicles with removable bollard
 - 9** Integrate wheelchair accessible pathway with a direct stepped access route from carpark to toilets. Layout indicative only.
 - 10** Remove and rehabilitate existing vehicle service trail
 - 11** Remove current pathway and stairs and rehabilitate

- Legend - area 6**
- Existing contours
 - Existing trees
 - Existing vegetation canopy
 - Proposed trees
 - Skillion toilet (six stall)
 - Skillion information shelter
 - Cable vehicle barrier
 - Concrete pavement
 - Cement stabilised crushed sandstone pavement - consider future sealing of roadway
 - Mass planting bed
 - Turfed area
 - Vehicle gate
 - Rubbish bin - (Skip bin)
 - Bench seat
 - Bollards
 - Park user fee (PUF) machine (existing)
 - Accessible car park space
 - Indicative Flood line Level (1983 survey RL 45.79)

Notes:

1. All furniture facilities to be installed with quick release fixings (as per Cattai NP) within 1 in 100 flood line.
2. All shelters to be constructed from steel due to termites.



Key - area 7

- 1** Existing Amenities Building
- future potential refurbishment of existing facility
- potential to expand existing building
- 2** Skillion BBQ shelter
- replace existing shelter and double BBQ with 4 x BBQ to custom NPWS scheme
- concrete pavement
- 3** Powered Sites for Campervans/Camper trailers (8 No.)
- Provision of power to each site. 1x Power bollard to cater for 2 sites.
- relocate and renew woodfired bbqs to allow one per site.
- option to provide concrete pad to each site
- 4** Powered sites for RVs (10 No.)
- Provision of power to each site. 1 x Power bollard to cater for 2 sites.
- relocate and renew woodfired bbqs to allow one per site.
- option to provide concrete pad to each site
- additional banquet tables on concrete pad
- 5** Line drainage swale with pebbles/rocks
- 6** Powered sites for camping (8 No.)
- Provision of power to each site. 1x Power bollard to cater for 2 sites.
- relocate and renew woodfired bbqs to allow one per site.
- 7** Skillion BBQ shelter
- 4 x BBQ to custom NPWS scheme
- concrete pavement
- 2 x banquet tables on concrete pads
- retain existing water tap
- 8** Access track to connect to the Wombat bridge path, Lower Campground, Wombat, Casuarina camping areas.
- 9** Areas suitable for Group Camping. Otherwise used for individuals (all non-powered sites)

Notes:

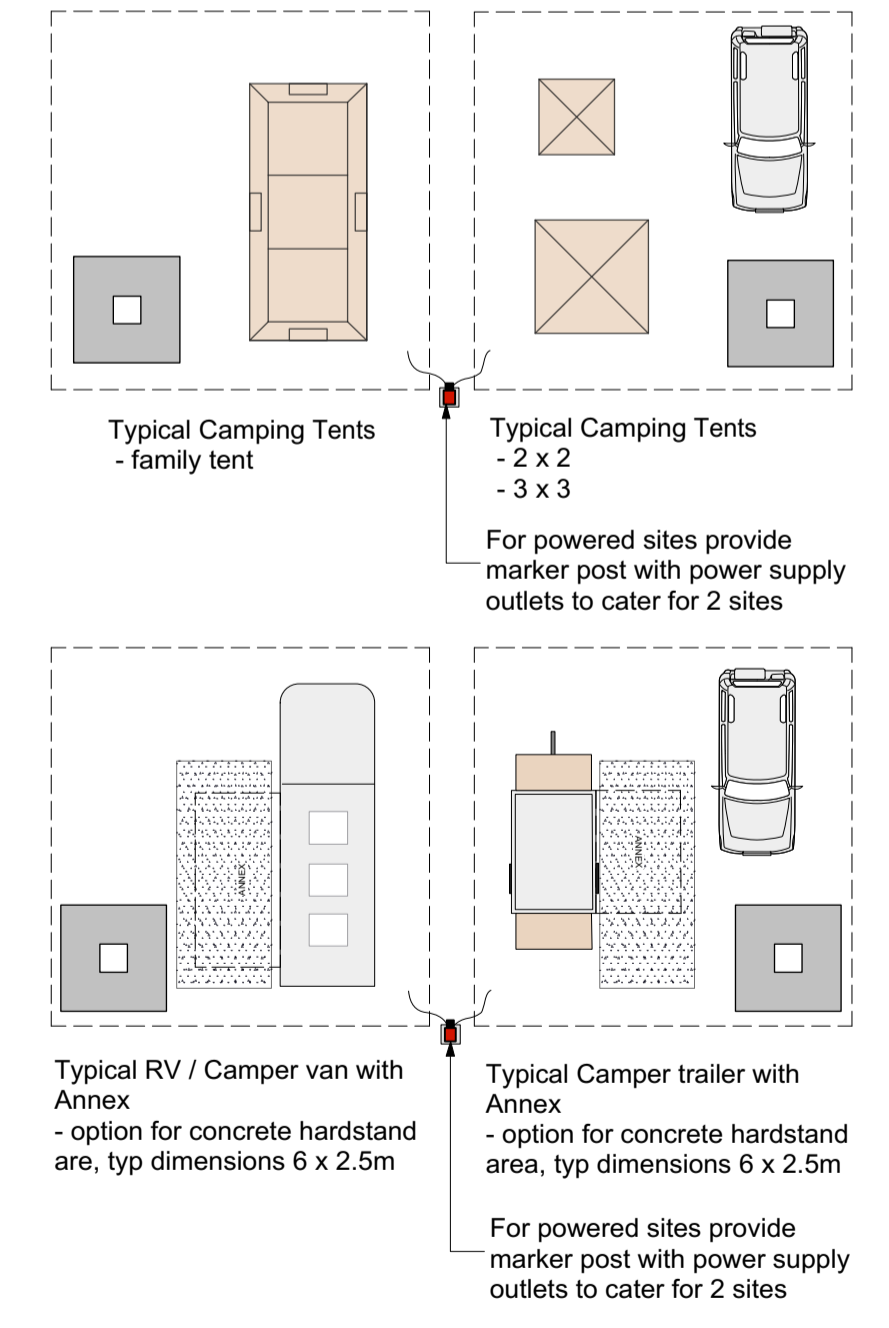
- 1. All furniture facilities to be installed with quick release fixings (as per Cattai NP) within 1 in 100 flood line.
- 2. All shelters to be constructed from steel due to termites.
- 3. Power bollard/marker post to include sign with site number and arrow depicting which side of post the site number refers to.

Legend - Area 7 Campground

- Existing contours
- Existing trees
- Existing vegetation canopy
- Post and Cable vehicle barrier
- Koppers log retaining wall
- Road pavement
- Concrete pavement
- Cement stabilised crushed sandstone pathway
- Turfed area
- Skillion barbecue shelter
- Banquet table on concrete slab
- Bollards
- Powered Campsite - individual sites Typical dimensions 10 x 10m
- Powered Campsite - Post marker with power supply
- Campsite - Woodfire BBQ
- Water tap
- Potable Water pipe
- Drainage swale
- Existing Rubbish bin - (Skip bin)
- Indicative Flood line Level (1983 survey RL 45.79)

TYPICAL DIMENSIONS OF POWERED SITE MODIFIED IN THIS LOCATION
RELOCATE WATER TAP OUT OF POWERED SITE

Typical Camping Sites (individual sites - Typical Dimensions 10 x 10m)





'Temporary Overflow Carparking'



Key - area 2.5 Option 1

- 1** Carpark
 - 8/10 No. 90° angle parking spaces
 - adequate room behind cars to load/unload car boot without stepping onto road
 - additional tree planting for shade and amenity
- 2** Possible road crossing with 150mm raised threshold to Engineers details
- 3** Bookable skillion standard shelters (2no.)
 - two banquet tables
 - concrete pavement
- 4** Skillion BBQ shelter
 - separate location to picnic shelter provides more generous space and functionality
 - double plate barbecue
 - concrete pavement
- 5** Bin and regulation signage to be provided
- 6** Firepit/Communal seating area
- 7** Potential path access to Cabins
- 8** Potential self contained cabins (Glamping)
- 9** Mass native screen planting to boundary (Trees appropriately sized where planted in proximity to overhead powerlines)
- 10** Access track to connect to the Wombat bridge path, Lower Campground, Wombat, Casuarina camping areas.
- 11** Access track to connect to Dam and Durrawi Picnic Area.

Legend - area 2.5 Option 1

- Existing contours
- Existing trees
- Existing vegetation canopy
- Proposed trees
- Double skillion standard shelter with banquet tables
- Skillion barbecue shelter
- Cable vehicle barrier
- Bollards
- Concrete pavement
- Cement stabilised crushed sandstone pathway
- Mass planting bed
- Turfed area
- Banquet table on concrete slab
- Campfire/Communal sitting area
- Bin enclosure
- Potential self contained Cabin 'Glamping' Accommodation
- Indicative Flood line Level (1983 survey RL 45.79)

1:100 year Flood Contour (RL 46.5)

'Glamping' Option 1



Key - area 2.5 Option 2

- 1** Carpark
- 20 No. 90° angle parking spaces
- adequate room behind cars to load/unload car boot without stepping onto road
- 2** Possible road crossing with 150mm raised threshold to Engineers details
- 3** Bookable skillion standard shelters (3no.)
- three banquet tables
- concrete pavement
(Alternative - 1 large communal shelter)
- 4** Skillion BBQ shelter
- separate location to picnic shelter provides more generous space and functionality
- double plate barbecue
- concrete pavement
- 5** Bins and regulation signage to be provided
- 6** Firepit/Communal seating area
- 7** Potential 'Glamping' tent layout (various size tents - 2 person, 4 person, family)
- 8** Mass native screen planting to boundary (Trees appropriately sized where planted in proximity to overhead powerlines)
- 9** Access track to connect to the Wombat bridge path, Lower Campground, Wombat, Casuarina camping areas.
- 10** Access track to connect to Dam and Durrawi Picnic Area.

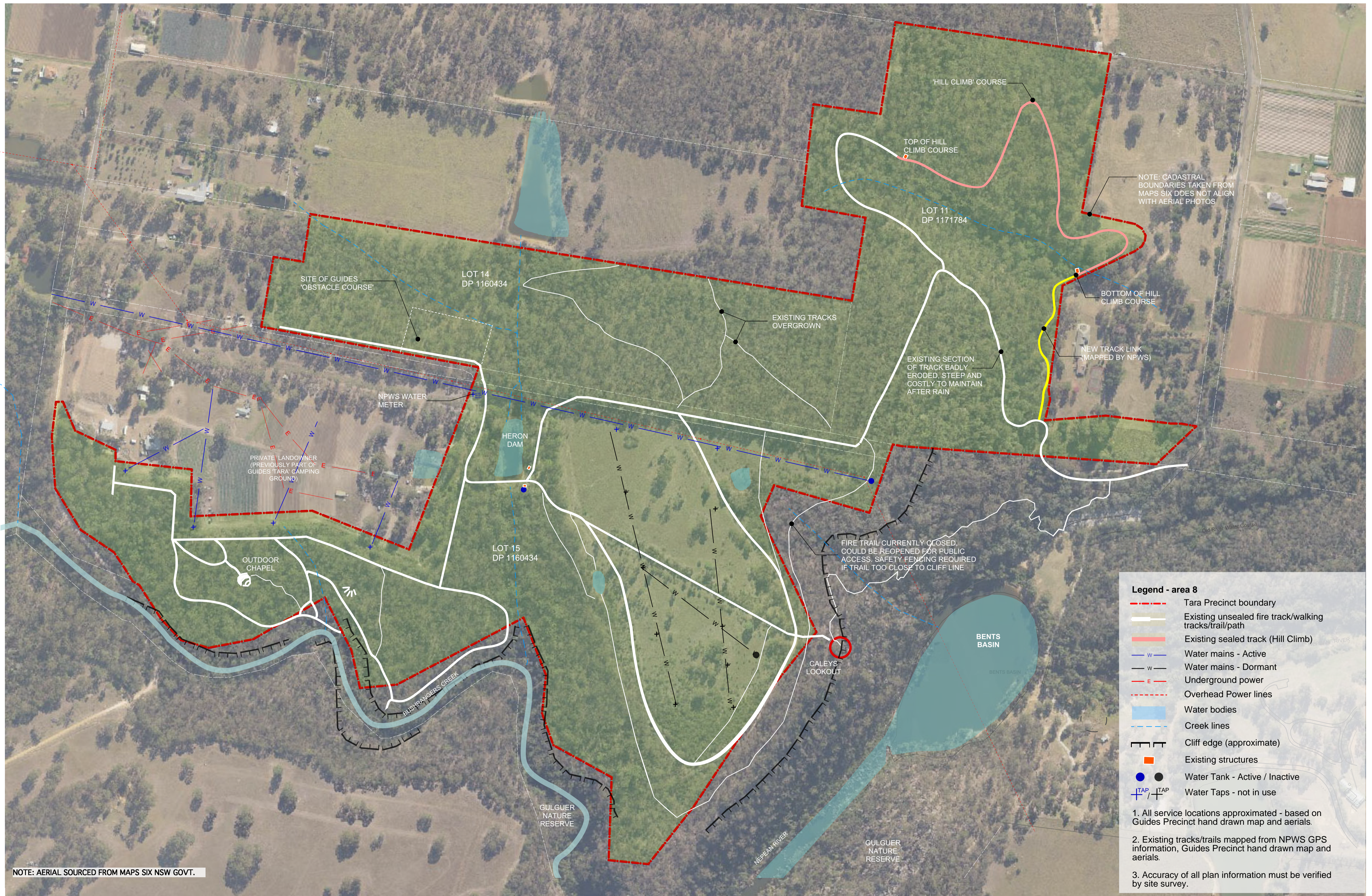
Legend - area 2.5 Option 2

- Existing contours
- Existing trees
- Existing vegetation canopy
- Proposed trees
- Double skillion standard shelter with banquet tables
- Skillion barbecue shelter
- Cable vehicle barrier
- Bollards
- Road pavement
- Concrete pavement
- Cement stabilised crushed sandstone pathway
- Mass planting bed
- Turfed area
- Banquet table on concrete slab
- Campfire/Communal sitting area
- Bin enclosure
- Potential Tent 'Glamping' Accommodation layouts (various size tents)
- Indicative Flood line Level (1983 survey RL 45.79)

ALTERNATIVE PARKING LAYOUT WITH DROPOFF BAY

1:100 year Flood Contour (RL 46.5)

'Glamping' Option 2

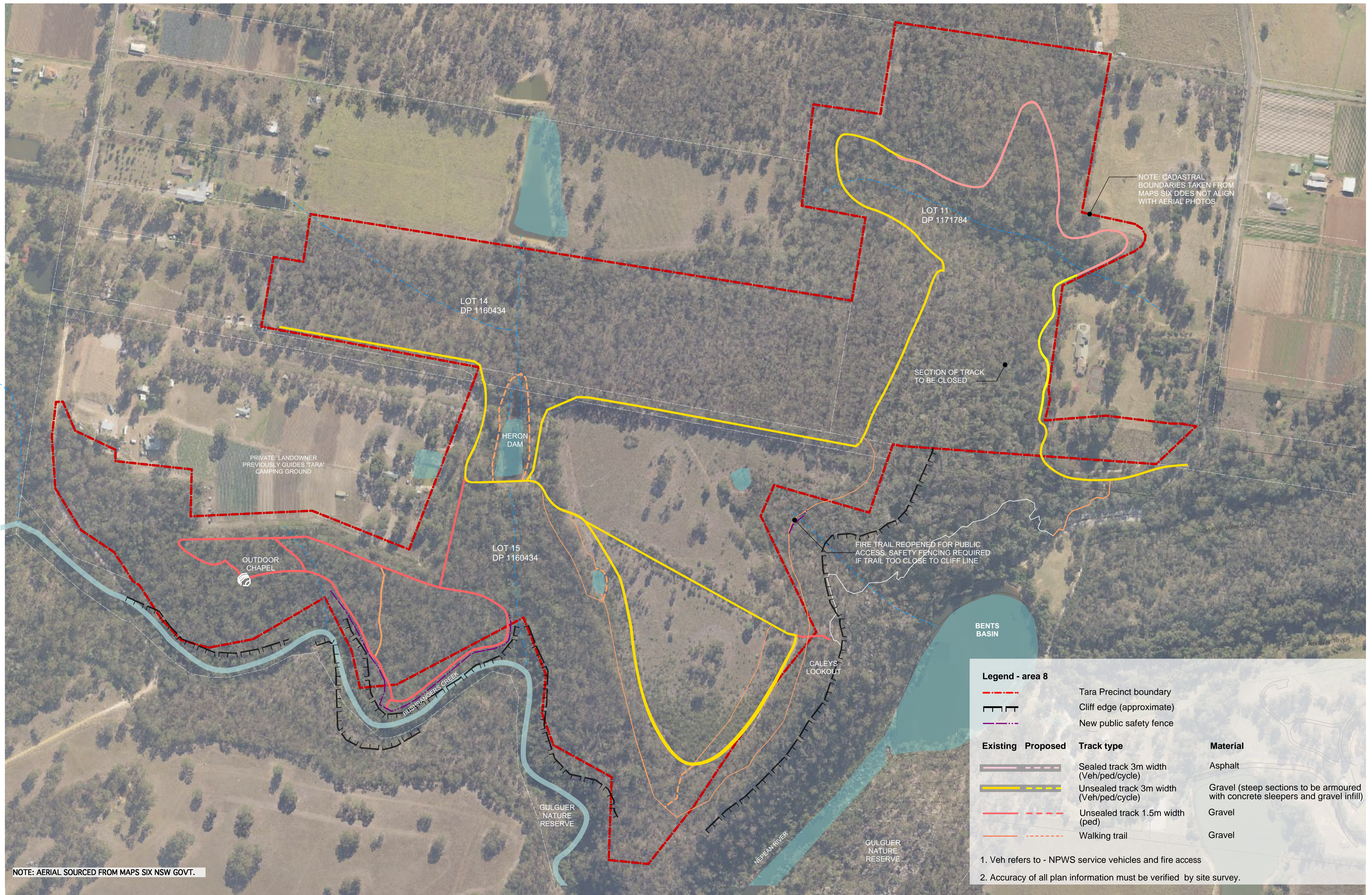


NOTE: AERIAL SOURCED FROM MAPS SIX NSW GOVT.

- Legend - area 8**
- - - Tara Precinct boundary
 - Existing unsealed fire track/walking tracks/trail/path
 - Existing sealed track (Hill Climb)
 - w Water mains - Active
 - w Water mains - Dormant
 - E Underground power
 - - - Overhead Power lines
 - Water bodies
 - - - Creek lines
 - Cliff edge (approximate)
 - Existing structures
 - Water Tank - Active / Inactive
 - +TAP Water Taps - not in use

1. All service locations approximated - based on Guides Precinct hand drawn map and aerials.
2. Existing tracks/trails mapped from NPWS GPS information, Guides Precinct hand drawn map and aerials.
3. Accuracy of all plan information must be verified by site survey.

REV	DATE	DESCRIPTION	EP	AM
1	Aug 2020	Issued for Information and Review	EP	AM
			DRAWN	CHECKED



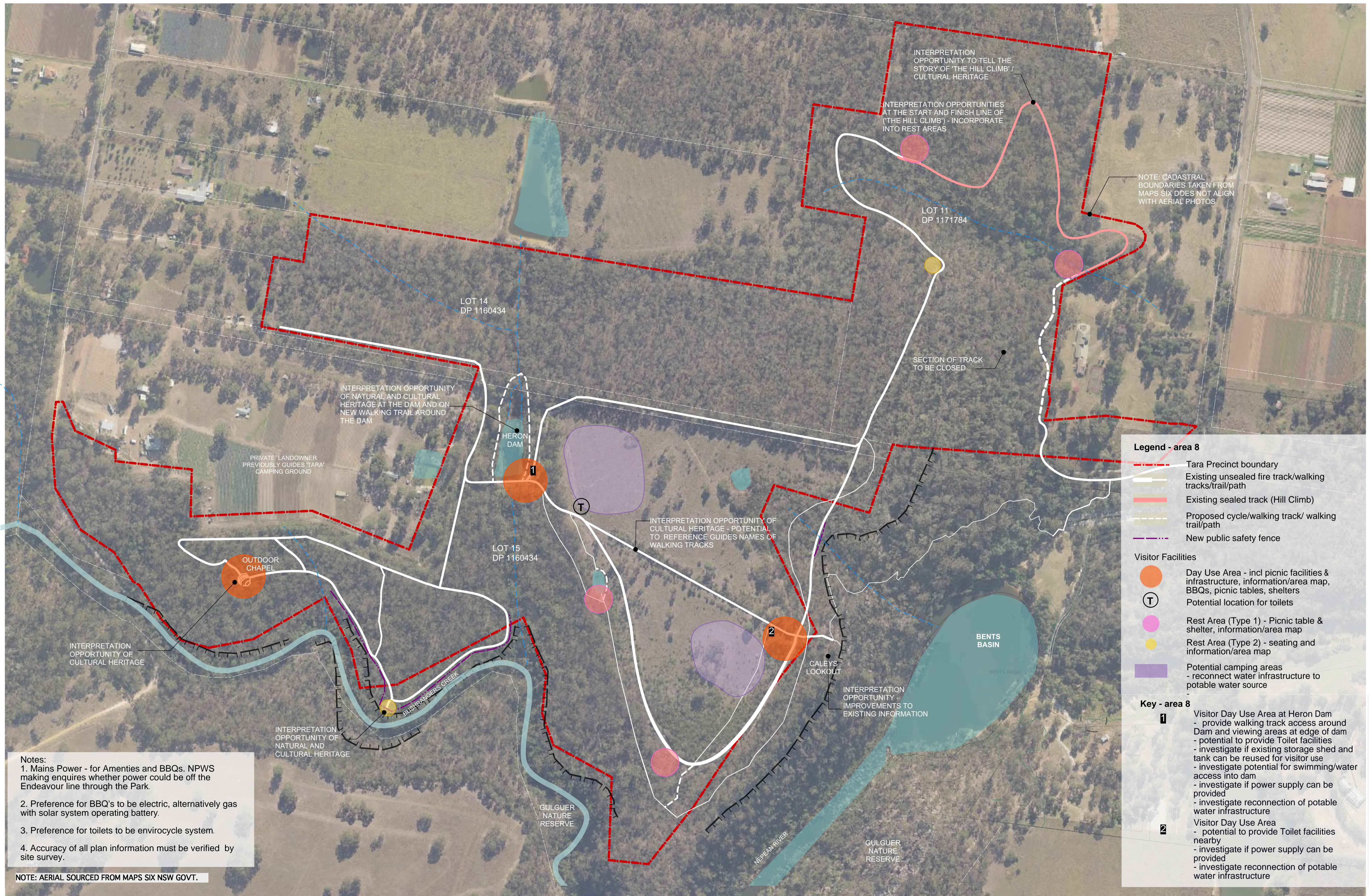
NOTE: AERIAL SOURCED FROM MAPS SIX NSW GOVT.

Legend - area 8

- - - - - Tara Precinct boundary
- Cliff edge (approximate)
- New public safety fence

Existing	Proposed	Track type	Material
		Sealed track 3m width (Veh/ped/cycle)	Asphalt
		Unsealed track 3m width (Veh/ped/cycle)	Gravel (steep sections to be armoured with concrete sleepers and gravel infill)
		Unsealed track 1.5m width (ped)	Gravel
		Walking trail	Gravel

1. Veh refers to - NPWS service vehicles and fire access
 2. Accuracy of all plan information must be verified by site survey.



Notes:
 1. Mains Power - for Amenities and BBQs. NPWS making enquires whether power could be off the Endeavour line through the Park.
 2. Preference for BBQ's to be electric, alternatively gas with solar system operating battery.
 3. Preference for toilets to be envirocycle system.
 4. Accuracy of all plan information must be verified by site survey.

NOTE: AERIAL SOURCED FROM MAPS SIX NSW GOVT.

Legend - area 8

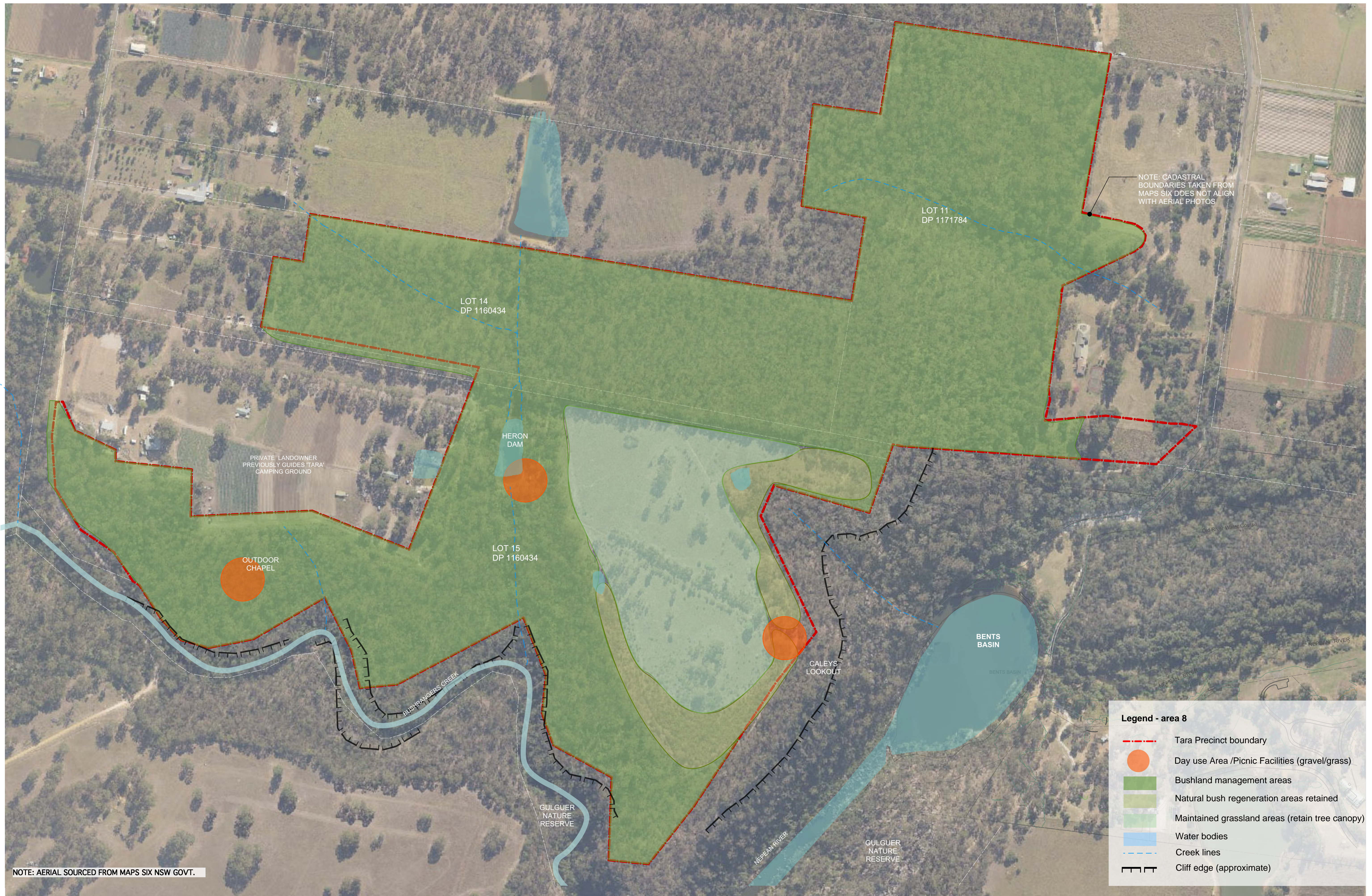
- Tara Precinct boundary
- Existing unsealed fire track/walking tracks/trail/path
- Existing sealed track (Hill Climb)
- Proposed cycle/walking track/ walking trail/path
- New public safety fence

Visitor Facilities

- Day Use Area - incl picnic facilities & infrastructure, information/area map, BBQs, picnic tables, shelters
- T Potential location for toilets
- Rest Area (Type 1) - Picnic table & shelter, information/area map
- Rest Area (Type 2) - seating and information/area map
- Potential camping areas - reconnect water infrastructure to potable water source

Key - area 8

- 1** Visitor Day Use Area at Heron Dam
 - provide walking track access around Dam and viewing areas at edge of dam
 - potential to provide Toilet facilities
 - investigate if existing storage shed and tank can be reused for visitor use
 - investigate potential for swimming/water access into dam
 - investigate if power supply can be provided
 - investigate reconnection of potable water infrastructure
- 2** Visitor Day Use Area
 - potential to provide Toilet facilities nearby
 - investigate if power supply can be provided
 - investigate reconnection of potable water infrastructure



NOTE: CADASTRAL BOUNDARIES TAKEN FROM MAPS SIX DOES NOT ALIGN WITH AERIAL PHOTOS

LOT 11
DP 1171784

LOT 14
DP 1160434

HERON DAM

PRIVATE LANDOWNER
PREVIOUSLY GUIDES 'TARA'
CAMPING GROUND

OUTDOOR
CHAPEL

LOT 15
DP 1160434

CALEY'S
LOOKOUT

BENTS
BASIN

NOTE: AERIAL SOURCED FROM MAPS SIX NSW GOVT.

Legend - area 8

- - - Tara Precinct boundary
- Day use Area /Picnic Facilities (gravel/grass)
- Bushland management areas
- Natural bush regeneration areas retained
- Maintained grassland areas (retain tree canopy)
- Water bodies
- Creek lines
- Cliff edge (approximate)

PREPARED BY
ep environmental partnership

CLIENT
Prepared for NSW National Parks and Wildlife Service
DISCLAIMER:
This concept plan was prepared by Environmental Partnership for NSW National Parks & Wildlife Service in good faith exercising all due care, but no representation, is made as to the accuracy or completeness for purpose of this document. This document may not represent Department of Planning and Environment policy. Base information contained on these plans is from various sources and time periods and is to the best of our knowledge.

TITLE
Concept Area 8 - Newly acquired Tara block additions Management Areas

REV	DATE	DESCRIPTION	EP	AH
1	Aug 2020	Issued for Information and Review		
			DRAWN	CHECKED

PROJECT
Bents Basin SCA
visitor facility upgrades

SCALE
1:2250 @ A1
1:4500 @ A3

DATE
AUG 2020

DRAWING
3121.CP15

ISSUE
1