



NSW State Vegetation Type Map

Technical notes – release C2.0M2.1 (2024)

Department of Climate Change,
Energy, the Environment and Water



Acknowledgement of Country

Department of Climate Change, Energy, the Environment and Water acknowledges the Traditional Custodians of the lands where we work and live.

We pay our respects to Elders past, present and emerging.

This resource may contain images or names of deceased persons in photographs or historical content.

© 2024 State of NSW and Department of Climate Change, Energy, the Environment and Water

With the exception of photographs, the State of NSW and Department of Climate Change, Energy, the Environment and Water (the department) are pleased to allow this material to be reproduced in whole or in part for educational and non-commercial use, provided the meaning is unchanged and its source, publisher and authorship are acknowledged. Specific permission is required to reproduce photographs.

Learn more about our copyright and disclaimer at www.environment.nsw.gov.au/copyright

Cover photo: Acacia loderi shrublands, Threatened Ecological Community. Martin Westbrooke/DCCEEW

Published by:

Environment and Heritage

Department of Climate Change,
Energy, the Environment and Water

Locked Bag 5022, Parramatta NSW 2124

Phone: +61 2 9995 5000 (switchboard)

Phone: 1300 361 967 (Environment and Heritage enquiries)

TTY users: phone 133 677, then ask for 1300 361 967

Speak and listen users: phone 1300 555 727, then ask for 1300 361 967

Email info@environment.nsw.gov.au

Website www.environment.nsw.gov.au

ISBN 978-1-923357-01-3

EH 2024/0307 November 2024

Find out more at:

environment.nsw.gov.au

Contents

- 1. Background 1
- 2. Revising the State Vegetation Type Map 2
 - 2.1 Uplifting new plant community type mapping 2
 - 2.2 Including user feedback 2
- 3. Revising the Native Vegetation Extent Raster 4
- 4. Comparison of mapped plant community types with plant community type master list C2.0 5
- 5. Plant community type percent cleared values 6
- References 7
- Appendix 1 8
- Appendix 2 9
- Appendix 3 13

List of tables

Table 1	Feedback received on version C2.0M2.0 and general location of comments	8
Table 2	PCTs mapped in SVTM version C2.0M2.1 that are not approved in NSW PCT master list C2.0	9
Table 3	Approved PCTs (NSW PCT master list C2.0) that are not mapped in SVTM version C2.0M2.1	13

List of figures

Figure 1	Location of changes to the State Vegetation Type Map between C2.0M2.0 and C2.0M2.1	1
Figure 2	C2.0M2.0 version (pre-clearing map). Yellow PCT 3616, Green PCT 3321, Red PCT 3262	3
Figure 3	C2.0M2.1 version (pre-clearing map) Yellow PCT 3616, Green PCT 3321, Red PCT 3262	3

1. Background

The State Vegetation Type Map (SVTM) was first published in June 2022 (version C1.1M1.0, see DPE 2022). It is revised and updated annually to include new sources of information, including survey sites, expert opinions, revisions, corrections and new mapping.

Version C1.1M1.1 was published in December 2022 and version C2.0M2.0 in December 2023.

These technical notes describe the 2024 update to the SVTM – version C2.0M2.1, which includes feedback received between June 2023 and June 2024.

The extent of revisions to C2.0M2.0 are shown on Figure 1.

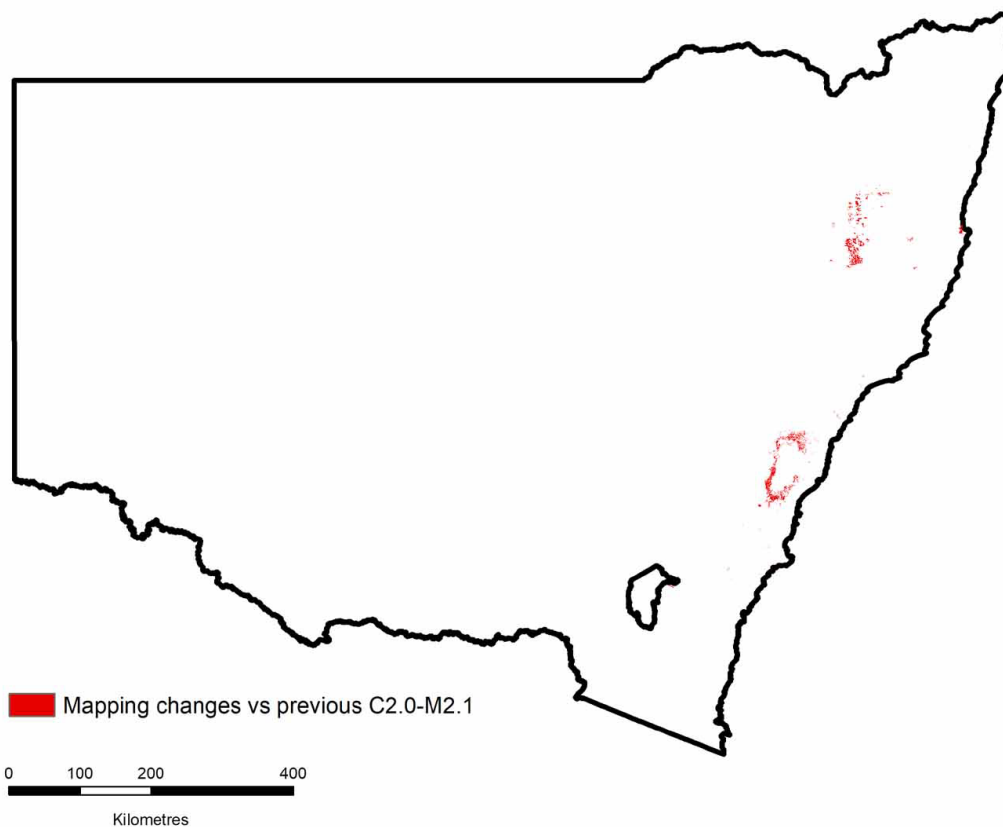


Figure 1 Location of changes to the State Vegetation Type Map between C2.0M2.0 and C2.0M2.1

2. Revising the State Vegetation Type Map

All plant community type (PCT) attribution editing was undertaken on one master copy ArcGIS geodatabase of the C2.0M2.0 pre-clearing PCT coverage. This approach ensures that when the Native Vegetation Extent mask is applied, both the SVTM pre-clearing map and the SVTM extant map are spatially identical. Attribution changes to C2.0M2.0 included a comment on the source for the change which is listed in the master GIS attribution file.

2.1 Uplifting new plant community type mapping

Objective

To add new fine-scale map coverages to the SVTM C2.0M2.0 (pre-clearing).

Process

The following new mapping was ‘uplifted’ manually into the SVTM and ‘edge matched’ where required:

- Clybucca Reserves Vegetation VIS 5129 (NPWS 2023a)
- Kindee Creek State Conservation Area vegetation VIS 5130 (NPWS 2022)
- Willi Willi National Park Addition Vegetation 2023 VIS 5131 (NPWS 2023b)

If a proposed PCT attribution in the new mapping conflicted with the PCT identification of a BioNet PCT member plot, the attribution of the new mapping was excluded from the uplift.

2.2 Including user feedback

Objective

Revise the SVTM pre-clearing map to incorporate new PCT information provided from user feedback.

Process

NSW Department of Climate Change, Energy, the Environment and Water has widely publicised invitations to users to provide feedback through the SEED and Trees Near Me NSW (TNM) app feedback functions. Appendix 1 lists submissions received through the department’s ‘incident’ system from SEED and TNM, as well as email correspondence. Feedback was evaluated by the mapping team for its suitability for inclusion in the SVTM. Not all feedback may have resulted in follow-up edits to the SVTM.

Revisions based on user feedback were only applied to Eastern New South Wales as the mapping for Central New South Wales is currently under revision. No feedback was received relating to Central or Western New South Wales.

Feedback resulted in 2 spatially significant editing changes to C2.0M2.0:

1. Comprehensive remapping of the spatial relationship between PCT 3321 Cumberland Shale–Sandstone Ironbark Forest and PCT 3616 Sydney Hinterland Grey Gum Transition Forest. Based on the geology, PCT 3321 generally occurs on higher gentle plateaus and PCT 3616 on the slopes below. Remapping this relationship included a reinterpretation of the likely extent of PCT 3262 Sydney Turpentine Ironbark Forest in adjacent areas. Figure 2 and Figure 3 show an example of the revisions undertaken.
2. Mapping of PCT 3344 New England Ribbon Gum Grassy Forest on basalt elevations including associated enrichment areas across the greater Armidale region.

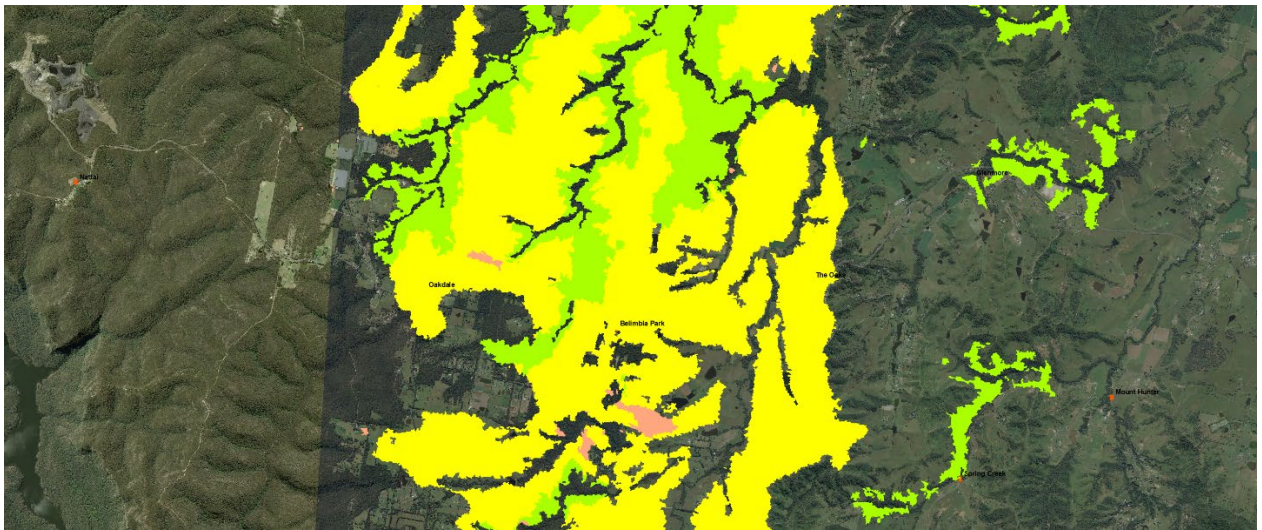
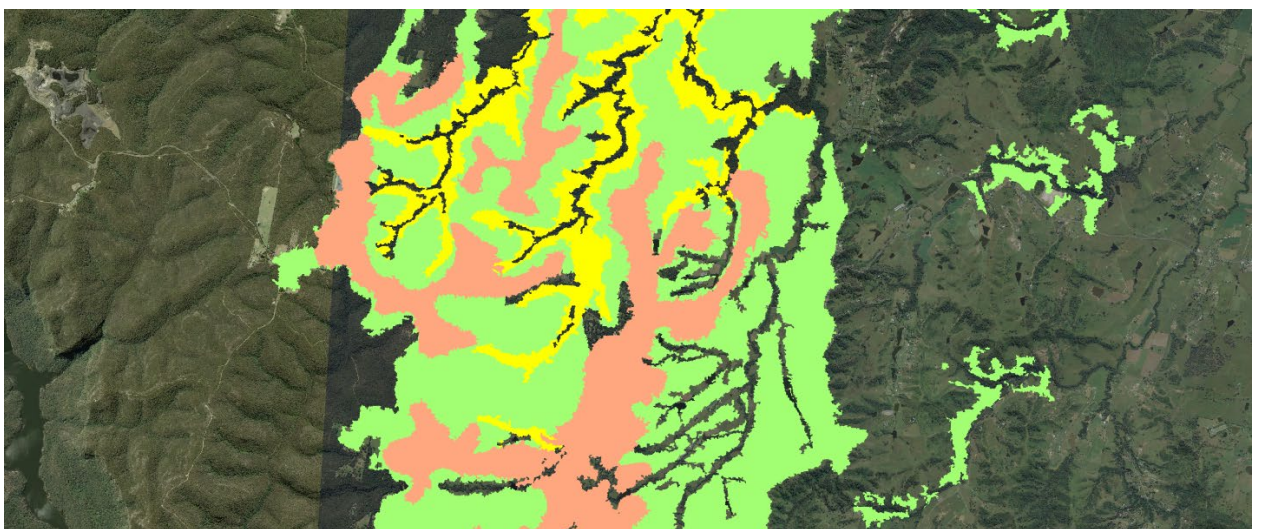


Figure 2 C2.0M2.0 version (pre-clearing map). Yellow PCT 3616, Green PCT 3321, Red PCT 3262



Figures 3 C2.0M2.1 version (pre-clearing map) Yellow PCT 3616, Green PCT 3321, Red PCT 3262

3. Revising the Native Vegetation Extent Raster

Minor edits were made to the Native Vegetation Extent mask based on feedback received regarding a recent clearing event in Bingara Gorge associated with road, gas pipeline and other developments.

All edits resulted in version 1.6 of the Native Vegetation Extent mask that was then applied to SVTM C2.0M2.0 to create C2.0M2.1.

4. Comparison of mapped plant community types with plant community type master list C2.0

Appendix 2 provides an updated list of PCTs mapped in SVTM version C2.0M2.1 that are not approved in the NSW PCT master list C2.0. For related approved PCTs, please refer to DPE (2022).

Appendix 3 provides an updated list of approved PCTs (NSW PCT master list C2.0) that are not mapped in SVTM version C2.0M2.1.

For further information about PCT master list and SVTM mapping discrepancies please refer to DPE (2022).

5. Plant community type percent cleared values

There is no change to BioNet PCT percent cleared statistics resulting from this 2024 SVTM release.

PCT percent cleared statistics and an associated technical report will accompany the SVTM mapping release in 2025.

References

DPE (2022) *NSW State Vegetation Type Map: Technical notes 2022*, <https://www.environment.nsw.gov.au/research-and-publications/publications-search/nsw-state-vegetation-type-map-technical-notes-2022>

DPE (2023) *NSW State Vegetation Type Map: Technical notes – release C2.0M2.0*, <https://www.environment.nsw.gov.au/-/media/OEH/Corporate-Site/Documents/BioNet/svtm-c2-0M2-0-technical-notes-230381.pdf>

NPWS (2022) NPWS, *Kindee Creek State Conservation Area Vegetation*. VIS 5130. <https://datasets.seed.nsw.gov.au/dataset/kindee-creek-state-conservation-area-vegetation-2022-vis-id-5130>

NPWS (2023a) NPWS, *Clybucca Reserves Vegetation*. VIS 5129. <https://datasets.seed.nsw.gov.au/dataset/clybucca-reserves-vegetation-2023-vis-id-5129>

NPWS (2023b) NPWS, *Willi Willi National Park Addition Vegetation 2023*. VIS 5131. <https://datasets.seed.nsw.gov.au/dataset/willi-willi-np-addition-vegetation-2023-vis-id-5131>

Appendix 1

Table 1 Feedback received on version C2.0M2.0 and general location of comments

Location	Feedback reference
Hornsby	INC0719766
Moss Vale	INC0799879
Cobbitty	INC0803907
Mittagong	INC0804604
Mount Jellore	INC0805266
Port Macquarie	email to B Denholm 10 Jan 2024
Batemans Bay	INC0810908
Ulladulla	INC0810907
Nowra	INC0824497
Bendemeer	INC0842867
Raymond Terrace	INC0849902
Canberra	INC0851846
Nundle	INC0857012
Orangeville	email to B Denholm 27 March 2024
Liverpool	INC0863288
Bare Point	INC0734429
Ulladulla	INC0736336
Sallys Corner	INC0736626
Sallys Corner	INC0736622
Mount Duval	INC0752801
Black Mountain	INC0779957
Oallen	email #1 to B Denholm 18 March 2024
Oallen	email #2 to B Denholm 18 March 2024
Armidale	email to B Denholm and pers com 15 May 2024
Currajong Point	email to B Denholm and pers com 15 May 2024
Bingara Gorge	Ref number 170-719-440-4487

Appendix 2

Table 2 PCTs mapped in SVTM version C2.0M2.1 that are not approved in NSW PCT master list C2.0

PCT ID	PCT name	PCT definition status C2.0 (BioNet Vegetation Classification application)
507	Black Sallee – Snow Gum grassy woodland of the New England Tableland Bioregion	Decommissioned
522	Kunzea – Leptospermum novae-angliae heath on granite outcrops of the New England Tableland Bioregion and NSW North Coast Bioregion	Decommissioned
526	Mountain Ribbon Gum – Messmate – Broad-leaved Stringybark open forest on granitic soils of the New England Tableland Bioregion	Decommissioned
608	Mountain Gum – Blakely's Red Gum open forest on metasediments of the Torrington area of the New England Tableland Bioregion	Decommissioned
637	Alpine and sub-alpine peatlands, damp herbfields and fens, South Eastern Highlands Bioregion and Australian Alps Bioregion	Decommissioned
680	Black Sallee – Tussock Grass open woodland of the South Eastern Highlands Bioregion	Decommissioned
708	Blue Mountains Mallee Ash – Dwarf Casuarina heath of the upper Blue Mountains, Sydney Basin Bioregion	Decommissioned
732	Broad-leaved Peppermint – Ribbon Gum grassy open forest in the north east of the South Eastern Highlands Bioregion	Decommissioned
741	Brown Barrel – gum moist open forest of the escarpment ranges of NSW North Coast Bioregion and New England Tableland Bioregion	Decommissioned
777	Coast Grey Box – Mountain Grey Gum – stringybark moist shrubby open forest in coastal gullies, southern South East Corner Bioregion	Decommissioned
893	Kangaroo Grass – Poa fawcettiae open grassland on limestone in northern Kosciuszko National Park, Australian Alps Bioregion	Decommissioned

PCT ID	PCT name	PCT definition status C2.0 (BioNet Vegetation Classification application)
934	Messmate open forest of the tableland edge of the NSW North Coast Bioregion and New England Tableland Bioregion	Decommissioned
939	Montane wet heath and bog of the eastern tablelands, South Eastern Highlands Bioregion	Decommissioned
953	Mountain Gum – Snow Gum – Broad-leaved Peppermint shrubby open forest of montane ranges, South Eastern Highlands Bioregion and Australian Alps Bioregion	Decommissioned
973	Native Olive – Rusty Fig semi-evergreen vine thicket of the upper Hunter Valley, Sydney Basin Bioregion	Decommissioned
993	New England Blackbutt grassy open forest of the eastern New England Tableland Bioregion	Decommissioned
997	New England stringybarks – peppermint open forest of the New England Tableland Bioregion	Decommissioned
1100	Ribbon Gum – Snow Gum grassy forest on damp flats, eastern South Eastern Highlands Bioregion	Decommissioned
1103	Ribbon Gum – Yellow Box grassy woodland on undulating terrain of the eastern tablelands, South Eastern Highlands Bioregion	Decommissioned
1105	River Oak open forest of major streams, Sydney Basin Bioregion and South East Corner Bioregion	Decommissioned
1190	Snow Gum – Candle Bark shrubby open forest in valleys of the southern ACT ranges, South Eastern Highlands Bioregion	Decommissioned
1194	Snow Gum – Mountain Gum – Mountain Ribbon Gum open forest on ranges of the NSW North Coast Bioregion and eastern New England Tableland Bioregion	Decommissioned
1224	Sub-alpine dry grasslands and heathlands of valley slopes, southern South Eastern Highlands Bioregion and Australian Alps Bioregion	Decommissioned
1271	Tea-tree tall riparian shrubland, South Eastern Highlands Bioregion, South East Corner Bioregion and Australian Alps Bioregion	Decommissioned

PCT ID	PCT name	PCT definition status C2.0 (BioNet Vegetation Classification application)
1310	White Box – Yellow Box grassy woodland on basalt slopes in the upper Hunter Valley, Brigalow Belt South Bioregion	Decommissioned
1572	Grey Myrtle – Mountain Blue Gum – Rough-barked Apple ferny tall open forest in sandstone gullies of the Sydney Basin	Decommissioned
1598	Forest Red Gum grassy open forest on floodplains of the lower Hunter	Decommissioned
1602	Spotted Gum – Narrow-leaved Ironbark shrub - grass open forest of the central and lower Hunter	Decommissioned
1629	Narrow-leaved Stringybark – Grey Gum shrubby open forest on sandstone ranges of the Sydney Basin	Decommissioned
1737	Typha rushland	Decommissioned
1782	Hornsby enriched sandstone exposed woodland	Decommissioned
3128	Mid North Littoral Rainforest	Decommissioned
1853	Blue Mountains Gorges Grey Gum Sheltered Forest	Withdrawn
1857	Central Tableland Sand-slope Scribbly Gum Woodland	Withdrawn
1858	Cudgegong Foothills Forest	Withdrawn
1860	Growee Ranges Grey Gum-Scribbly Gum Forest	Withdrawn
1861	Growee Ranges Grey Gum Sheltered Forest	Withdrawn
1870	Western Hunter Grey Gum-Stringybark Forest	Withdrawn
1871	Western Hunter Dwyers Red Gum-Cypress Woodland	Withdrawn
1872	Western Hunter Rockplate Heath-Mallee	Withdrawn
1876	Capertee Foothills Box-Stringybark Forest	Withdrawn
1877	Capertee Escarpment Ironbark Forest	Withdrawn
1878	Capertee Escarpment Slaty Gum Forest	Withdrawn

PCT ID	PCT name	PCT definition status C2.0 (BioNet Vegetation Classification application)
1879	Sydney Hinterland Riverflat Paperbark Swamp Forest	Withdrawn
1880	River Oak Forest	Withdrawn
1881	Western Hunter Flats Rough-barked Apple Forest	Withdrawn
1885	Central Tableland Sedge Swamp	Withdrawn
1886	Western Hunter Footslopes Box Woodland	Withdrawn
1889	Cudgegong Footslopes Yellow Box Forest	Withdrawn
1891	Central Tableland Clay White Box Woodland	Withdrawn
1893	Western Blue Mountains Pagoda Shrubland	Withdrawn
1895	Sydney Hinterland Grey Myrtle Dry Rainforest	Withdrawn
1899	Dry Ranges Rusty Fig Rainforest Scrub	Withdrawn
1906	Central Tableland Ribbon Gum-Apple Gully Forest	Withdrawn
1907	Montane Basalt Ribbon Gum Moist Forest	Withdrawn

Appendix 3

Table 3 Approved PCTs (NSW PCT master list C2.0) that are not mapped in SVTM version C2.0M2.1

PCT ID	PCT name
22	Semi-arid shrubby Buloke – Slender Cypress Pine woodland, far south western New South Wales
42	River Red Gum/River Oak riparian woodland wetland in the Hunter Valley
49	Partly derived Windmill Grass – copperburr alluvial plains shrubby grassland of the Darling Riverine Plains Bioregion and Brigalow Belt South Bioregion
66	Artesian Mound Spring sedgeland wetland mainly of the Mulga Lands Bioregion
121	Umbrella Mulga – Beefwood open shrubland on Peery Hills, Mulga Lands Bioregion
138	Desert Paperbark shrubland wetland of semi-arid and arid climate zone watercourses
150	Bottlewasher – Copperburr grassland of the arid zone
162	Sturts Pigface sparse forbland of saline soils of the arid zone
165	Derived corkscrew grass grassland/forbland on sandplains and plains in the semi-arid (warm) climate zone
183	Windmill Grass – love grass – daisy derived grassland/forbland of arid climate zone
210	Shrubby Twinleaf – saltbush open shrubland on silcrete scarps of the arid zone
226	Cyperus – Typha sedgeland wetland of the arid zone climate zone
250	Derived tussock grassland of the central western plains and lower slopes of New South Wales
258	Gum Coolabah – Mugga Ironbark – White Cypress Pine woodland on granite low hills in the eastern Cobar Peneplain Bioregion and central NSW South Western Slopes Bioregion
262	Submerged flora of saline temporary wetland of the arid zone
263	Submerged flora of saline permanent wetland of the arid zone
270	White Box – Tumbledown Red Gum – Long-leaved Box shrub/grass woodland on fine-grained sediments of the upper Macquarie River gorge, NSW central western slopes
271	Spotted Fuchsia shrubland wetland in drainage depressions on inland plains
275	Herbaceous White Box – Apple Box valley woodland of the NSW central western slopes
315	Red Box – Dwyers Red Gum low woodland on shallow red earths on upper hillslopes and hillcrests in the upper Murray River region

PCT ID	PCT name
340	Red Stringybark – red gum – Black Cypress Pine – Kunzea – tea-tree shrubby open forest on granite ranges of the Boorowa – Wyangala region, NSW South Western Slopes Bioregion
344	Argyle Apple – Acacia mearnsii valley open forest of the Yass – Rye Park region of the South Eastern Highlands Bioregion and adjoining NSW South Western Slopes Bioregion
351	Brittle Gum – Broad-leaved Peppermint – Red Stringybark open forest in the north-western part (Yass to Orange) of the South Eastern Highlands Bioregion
353	Inland Scribbly Gum – Red Stringybark – box – Daviesia latifolia – snow grass open forest on sandy loam soils from acid volcanics in the Boorowa – Young region of the NSW South Western Slopes Bioregion
360	Gilgai wetland mosaic in the southern NSW South Western Slopes Bioregion
363	Swamp Paperbark sodic scald wetland/shrubland of the Yetman – Yalarbon region Darling Riverine Plains Bioregion and Brigalow Belt South Bioregion
364	Wetland on sodic soils in the Yetman–Yalarbon region, mainly Brigalow Belt South Bioregion
374	Grey Box – cypress pine – red gum woodland on deep sandy loam soil in northern NSW Brigalow Belt South Bioregion
390	Warrumbungle Currawang very tall shrubland
392	Warrumbungle She Oak heathland
395	Derived speargrass – wallaby grass – wire grass mixed forb grassland mainly in the Coonabarabran – Pilliga – Coolah region
415	Fringe Myrtle shrubland of the Pilliga Scrub
424	Dwyers Red Gum heathy low open woodland on sandstone ridges in the Pilliga Scrub, Brigalow Belt South Bioregion
432	Dwyers Red Gum – Dirty (Baradine) Gum – cypress pine shrubby woodland of the Narrabri region of the Brigalow Belt South Bioregion
438	River Red Gum riparian tall woodland wetland on basaltic alluvial soils mainly in the Liverpool Plains sub-region, Brigalow Belt South Bioregion
443	Red Ironbark – sheoak shrubby woodland of the Yetman–Warialda region, northern NSW Brigalow Belt South Bioregion
445	Brigalow viney scrub open forest on loamy soils in low hill landscapes in the northern Brigalow Belt South Bioregion
451	Derived Spear Grass – Slender Bamboo Grass mixed tussock grassland mainly of the northern Brigalow Belt South Bioregion and Nandewar Bioregion
452	Mixed vine thicket low eucalypt woodland of the northern-western Brigalow Belt South Bioregion

PCT ID	PCT name
462	Dwyers Red Gum – White Cypress Pine - Motherumbah open forest/woodland on sandstone hillcrests in the Liverpool Plains region, Brigalow Belt South Bioregion
465	Reedland – tussock grass – segeland fen swampy wetland of impeded creeks in southern Brigalow Belt South Bioregion
472	Thyme Honey-myrtle – red gum – Mugga Ironbark shrubland/woodland in impeded drainage flats or depressions in the southern Brigalow Belt South Bioregion
474	Dwyers Red Gum – she oak mallee shrubland on eolian sand in the Gilgandra region, Brigalow Belt South Bioregion
475	White Cypress Pine – Buloke – Grey Box grassy eolian lunette grassy woodland in the southern Brigalow Belt South Bioregion
480	Black Cypress Pine - ironbark +/- Narrow-leaved Wattle low open forest mainly on Narrabeen Sandstone in the Upper Hunter region of the Sydney Basin Bioregion
484	Derived tall spear grass grassland on mainly basalt hills of the Liverpool Plains, Liverpool Range and in the upper Hunter Valley (Merriwa district), south eastern Brigalow Belt South Bioregion
493	Forest Oak – Rough-barked Apple – Silvertop Stringybark shrub grass open forest on protected slopes of the Liverpool Range
495	Brittle Gum – Silvertop Stringybark grassy open forest of the Liverpool Range, Brigalow Belt South Bioregion
498	Black Sallee plateau low woodland in the southern Brigalow Belt South Bioregion
503	Black Cypress Pine – Orange Gum heath shrubland or woodland on granite outcrops of the New England Tableland Bioregion
504	Black Cypress Pine – Rough-barked Apple – stringybark shrubby open forest of the Nandewar Bioregion and western New England Tableland Bioregion
511	Queensland Bluegrass – Redleg Grass – Rats Tail Grass – spear grass – panic grass derived grassland of the Nandewar Bioregion and Brigalow Belt South Bioregion
512	Caleys Ironbark – Orange Gum – Black Cypress Pine shrubby open forest on acid volcanics of the northern New England Tableland Bioregion
513	Candlebark – Ribbon Gum grassy woodland of the New England Tableland Bioregion
529	Mugga Ironbark – stringybark shrubby open forest of the far southern Nandewar Bioregion and New England Tableland Bioregion
533	New England Peppermint grassy woodland on granitic substrates of the New England Tableland Bioregion
534	New England Peppermint grassy woodland on sedimentary or basaltic substrates of the New England Tableland Bioregion
536	Orange Gum – Black Cypress Pine shrubby open forest on acid volcanics of the north western New England Tableland Bioregion

PCT ID	PCT name
539	Rough-barked Apple – Cabbage Gum grassy woodland of the New England Tableland Bioregion
545	Round-leaved Gum – Broad-leaved Stringybark grassy forest on metasediments in the Torrington area of the New England Tableland Bioregion
555	White Cypress Pine – Orange Gum – Acacia granite outcrop shrubland in the Moonbi area of the Nandewar Bioregion and New England Tableland Bioregion
557	Western New England Blackbutt – Round-leaved Gum – Stringybark shrubby open forest in the Torrington area of the New England Tableland Bioregion
569	Derived Snow Grass +/- Kangaroo Grass +/- Wild Sorghum tussock grassland of the NSW Northern Tablelands
575	Tenterfield Woollybutt – Silvertop Stringybark open forest of the New England Tableland Bioregion
579	Tumbledown Red Gum – Black Cypress Pine shrubby open forest on rhyolite geology of the Nandewar Bioregion and north west New England Tableland Bioregion
586	Snow Grass – Swamp Foxtail tussock grassland sedgeland of cold air drainage valleys of the New England Tableland Bioregion
606	Mountain Gum – Ribbon Gum open forest of drainage lines of the southern New England Tableland Bioregion
607	Montane bogs on the western fall of the New England Tableland Bioregion
610	Black Cypress Pine – Dwyers Gum low woodland/open forest on rocky ridges mainly of the Nandewar Range
614	Giant Stinging Tree – fig – Socketwood – Red Cedar dry sub-tropical rainforest of the Liverpool Range, Brigalow Belt South Bioregion
616	Grey Myrtle – Rusty Fig dry rainforest in sandstone gorges of the upper Hunter Valley, mainly Sydney Basin Bioregion
617	Narrow-leaved Ironbark – box – Mock Olive shrubby open forest mainly on basalt slopes over sandstone in the upper Hunter Valley, Brigalow Belt South Bioregion and Sydney Basin Bioregion
619	Derived Wire Grass grassland of the NSW Brigalow Belt South Bioregion and Nandewar Bioregion
620	Sydney Blue Gum – Silvertop Stringybark very tall wet open forest on protected slopes on the Liverpool Range/north coast
621	Grey Gum – Rough-barked Apple alluvial flat woodland in the upper Hunter Valley, mainly Sydney Basin Bioregion
622	Grey Gum – Forest Red Gum – Yellow Box grassy tall open forest on mid-slopes of the Hunter Valley - North Coast escarpment
623	Narrow-leaved Ironbark +/- Grey Box grassy woodland of the upper Hunter Valley, mainly Sydney Basin Bioregion

PCT ID	PCT name
624	Large-fruited Grey Gum – Narrow-leaved Stringybark open forest on sheltered sandstone hillslopes in the Scone region of the upper Hunter Valley
625	Forest Ribbon Gum – Silvertop Stringybark – Sweet Pittosporum – Monkey Gum moist tall open forest of the northern upper Hunter Valley escarpment
626	Murrurundi Stringybark dry open forest on conglomerate outcrops in the upper Hunter Valley region
627	Coobah – Rusty Fig low woodland on limestone outcrops in the Tamworth – Attunga region of the Nandewar Bioregion
629	Brigalow – Bladder Saltbush open woodland to tall open shrubland in the Come-By-Chance region, Darling Riverine Plains Bioregion and Brigalow Belt South Bioregion
633	Speargrass – Redleg Grass derived grassland on hills in the Jindera to Holbrook region, southern NSW South Western Slopes Bioregion
652	Apple Box – Eurabbie grassy open forest on sheltered slopes and gullies in the Burrinjuck area, South Eastern Highlands Bioregion
671	Black Cypress Pine – Acacia – Red Ash shrubby woodland of the far northern Brigalow Belt South Bioregion
672	Black Cypress Pine – Narrow-leaved Ironbark – Dirty Gum grassy open forest of north western Nandewar Bioregion
673	Black Cypress Pine – Narrow-leaved Stringybark heathy woodland of the southern Brigalow Belt South Bioregion
674	Black Cypress Pine – Tumbledown Gum – Narrow-leaved Ironbark open forest of northern parts of the Nandewar Bioregion
675	Black Cypress Pine – Tumbledown Red Gum – Caley's Ironbark shrubby open forest of the Nandewar Bioregion
676	Black Cypress Pine shrubby woodland of the Brigalow Belt South Bioregion
700	Blakelys Red Gum – Black Cypress Pine dry shrub forest of the Lower Abercrombie area of the NSW South Western Slopes Bioregion
701	Blakelys Red Gum – Red Stringybark open forest on slopes and hills of the western slopes
702	Blakelys Red Gum riparian woodland of the Pilliga Outwash, Brigalow Belt South Bioregion
703	Blakelys Red Gum – Yellow Box – Rough-barked Apple grassy woodland of the Capertee Valley, Sydney Basin Bioregion
704	Blakelys Red Gum – Yellow Box grassy open forest or woodland of the New England Tableland Bioregion
705	Blakelys Red Gum moist sedgey woodland on flats and drainage lines of the South Eastern Highlands Bioregion and NSW South Western Slopes Bioregion

PCT ID	PCT name
710	Bluegrass - Redleg Grass – Common Woodruff clay plain grassland of northern Brigalow Belt South Bioregion
711	Bluegrass – Spear Grass – Redleg Grass derived grasslands of the Nandewar Bioregion
713	Blue-leaved Ironbark heathy woodland of the southern part of the Brigalow Belt South Bioregion
714	Blue-leaved Ironbark woodland on sandy uplands and slopes of the Darling Riverine Plains Bioregion
722	Brittle Gum – stringybark shrubby open forest on basalt residuals in the Capertee Valley, Sydney Basin Bioregion
727	Broad-leaved Peppermint – Brittle Gum – Red Stringybark dry open forest on the South Eastern Highlands Bioregion
730	Broad-leaved Peppermint – Mountain Gum dry open forest of the Central Tablelands area of the South Eastern Highlands Bioregion
731	Broad-leaved Peppermint – Red Stringybark grassy open forest on undulating hills, South Eastern Highlands Bioregion
734	Broad-leaved Stringybark – Blakelys Red Gum grassy woodlands of the New England Tableland Bioregion
746	Brown Bloodwood – cypress – ironbark heathy woodland in the Pilliga region of the Brigalow Belt South Bioregion
791	Cypress pine – Bulloak shrubby woodland of northern Brigalow Belt South Bioregion
796	Derived grassland of the NSW South Western Slopes
797	Derived grassland of the South Eastern Highlands Bioregion and South East Corner Bioregion
799	Derived grasslands of the Capertee Valley
810	Dirty Gum – White Cypress Pine – Northern Smooth-barked Apple shrub/grass open forest in the far north of the Nandewar Bioregion
845	Giant Stinging Tree – Fig dry subtropical rainforest of the NSW North Coast Bioregion and Brigalow Belt South Bioregion
847	Grey Box – Blakelys Red Gum – Yellow Box grassy open forest of the Nandewar Bioregion and New England Tableland Bioregion
853	Grey Box – Narrow-leaved Ironbark open forest of the Ashford area of the Nandewar Bioregion
856	Grey Box – Rough-barked Apple shrub/grass open forest of northern parts of the Nandewar Bioregion and New England Tableland Bioregion
863	Grey Gum – Narrow-leaved Stringybark – Inland Scribbly Gum shrubby open forest of the western Capertee Valley, Sydney Basin Bioregion

PCT ID	PCT name
884	Heathy shrubland on granitic outcrops of the central and western New England Tableland Bioregion
885	Heathy shrublands on rocky outcrops of the western slopes
889	Inland Scribbly Gum – Grey Gum – Narrow-leaved Ironbark shrubby open forest on hills of western Capertee Valley, Sydney Basin Bioregion
894	Kangaroo Grass – Purple Wiregrass – Mat-rush – Wallaby Grass – Common Buttons dry tussock grassland in the north-western and Eastern parts of the Southern Tablelands of the South Eastern Highlands Bioregion
895	Kangaroo Grass – Purple Wiregrass – Mat-rush – Wallaby Grass – Common Buttons dry tussock grassland on steep sites in the north-western and Eastern parts of the Southern Tablelands of the South Eastern Highlands Bioregion
921	Manna Gum – Rough-barked Apple – Yellow Box grassy woodland/open forest of the New England Tableland Bioregion and NSW North Coast Bioregion
924	Melaleuca linariifolia alluvial melaleuca thicket of the lower Blue Mountains and Capertee Valley, Sydney Basin Bioregion
940	Motherumbah (<i>Acacia cheelii</i>) woodlands on sandstones of the Brigalow Belt South Bioregion
957	Mugga Ironbark – Red Stringybark – Long-leaved Box dry grass forest of the NSW South Western Slopes Bioregion
983	New England Blackbutt – stringybark grassy forest in the eastern New England Tableland Bioregion and NSW North Coast Bioregion
991	New England Blackbutt – Youmans Stringybark grassy open forest of the western New England Tableland Bioregion
998	Northern Smooth-barked Apple – pine shrubby open forest of the northern Nandewar Bioregion and Brigalow Belt South Bioregion
1076	Plains Grass – Bluegrass grassland of the Nandewar and Brigalow Belt South Bioregion
1088	Red Box – Grey Gum – stringybark woodland on talus slopes of the western Blue Mountains, Sydney Basin Bioregion
1089	Red Box – Red Stringybark grassy open forest on basalts of the South Eastern Highlands Bioregion
1090	Red Ironbark – Brown Bloodwood shrubby woodland of the Brigalow Belt South Bioregion
1093	Red Stringybark – Brittle Gum – Inland Scribbly Gum dry open forest of the tablelands, South Eastern Highlands Bioregion
1095	Red Stringybark woodland of the dry slopes of the NSW South Western Slopes Bioregion

PCT ID	PCT name
1099	Ribbon Gum – Rough-barked Apple – Yellow Box grassy woodland/open forest of the New England Tableland Bioregion and NSW North Coast Bioregion
1110	River Tussock – Tall Sedge – Kangaroo Grass moist grasslands of the South Eastern Highlands Bioregion
1116	Rough-barked Apple – Silvertop Stringybark – Red Stringybark grassy open forest of south western New England Tableland Bioregion
1118	Rough-barked Apple riparian forb/grass open forest of the Nandewar Bioregion
1124	Rusty Fig – Wild Quince – Native Olive dry rainforest of rocky areas of the Nandewar Bioregion
1127	Sandstone cliff-face soak
1133	Scribbly Gum – Brown Bloodwood woodland on volcanic slopes of the southern Brigalow Belt South Bioregion
1165	Silvertop Stringybark – Orange Gum shrubby open forest of the central parts of the Nandewar Bioregion
1166	Silvertop Stringybark – Ribbon Gum ferny open forest in the Kaputar area of the Nandewar Bioregion
1176	Slaty Box – Grey Gum shrubby woodland on footslopes of the upper Hunter Valley, Sydney Basin Bioregion
1179	Slender Bamboo Grass – Spiny Saltbush grassland of the Brigalow Belt South Bioregion
1185	Snow Grass – Kangaroo Grass – Sheeps Burr grassland on undulating basalt plateaux, South Eastern Highlands Bioregion
1202	Speargrass grassland of the South Eastern Highlands Bioregion
1270	Tea-tree shrubland of drainage areas of the slopes and tablelands
1277	Tumbledown Gum – Blakelys Red Gum – pine shrubby forest of the Nandewar Bioregion
1278	Tumbledown Red Gum – Black Cypress Pine – Currawang woodland of ridges and rocky hills mainly of the Cobar Peneplain Bioregion
1279	Tumbledown Red Gum – Black Cypress Pine – Red Box low woodland of hills of the NSW South Western Slopes Bioregion
1288	Wallaby Grass – Kangaroo Grass – Rush – Blown Grass Wet Tussock Grassland Moist Grasslands of the South Eastern Highlands Bioregion
1289	Wallaby Grass – Red-grass – Tall Speargrass – Kangaroo Grass dry tussock grassland of the North Western and Eastern Southern Tablelands in the South Eastern Highlands Bioregion
1291	Warrego Grass – Nardoo wet grassland of the Brigalow Belt South Bioregion

PCT ID	PCT name
1296	Western New England Blackbutt shrubby open forest of the New England Tableland Bioregion
1303	White Box – Grey Gum – Kurrajong grassy woodland on slopes of the northern Capertee Valley, Sydney Basin Bioregion
1306	White Box – Red Stringybark shrubby woodlands on basalt slopes of the Nandewar Bioregion and Brigalow Belt South Bioregion
1307	White Box – White Cypress Pine – Silver-leaved Ironbark shrubby open forest of the Nandewar Bioregion
1308	White Box – White Cypress Pine shrubby open forest of the Nandewar Bioregion and Brigalow Belt South Bioregion
1313	White Cypress Pine – Narrow-leaved Ironbark shrub/grass open forest of the western Nandewar Bioregion
1314	White Cypress Pine – Silver-leaved Ironbark – Tumbledown Red Gum shrubby open forest of the Nandewar Bioregion and Brigalow Belt South Bioregion
1315	White Cypress Pine – Silver-leaved Ironbark grassy woodland of the Nandewar Bioregion
1316	White Cypress Pine – Silver-leaved Ironbark shrubby open forest of the Nandewar Bioregion
1317	White Cypress Pine – White Box – Silver-leaved Ironbark shrubby open forest of the Nandewar Bioregion
1324	Windmill Grass – Bluegrass derived grassland of the Moree plains of the Brigalow Belt South Bioregion
1332	Yellow Box – Grey Box – Red Gum woodland of the central eastern parts of the New England Tableland Bioregion
1341	Youmans Stringybark – New England Blackbutt – Narrow-leaved Black Peppermint – <i>Eucalyptus subtilior</i> open forest of the New England Tableland Bioregion
1381	Narrow-leaved Ironbark shrubby woodland of the Brigalow Belt South bioregion
1382	Rough-barked Apple – Red Stringybark shrubby open forest of the western New England Tableland Bioregion
1383	White Box grassy woodland of the Nandewar Bioregion and Brigalow Belt South Bioregion
1394	Rough-barked Apple – Silvertop Stringybark – Red Stringybark grassy open forest of the upper Hunter Valley, south western New England Tableland Bioregion and southern NSW North Coast Bioregion
1521	Black Olive Berry – Black Sassafras cool temperate rainforest in high altitude areas of the Barrington Tops and New England Tablelands
1523	Sassafras – Prickly Ash – Lilly Pilly warm temperate rainforest on ranges of the Barrington Tops and lower North Coast

PCT ID	PCT name
1529	Lilly Pilly – Coachwood gully warm temperate rainforest on sandstone ranges of the Sydney Basin
1531	Sassafras – Grey Possumwood warm temperate rainforest of the New England escarpment
1532	Sassafras warm temperate rainforest on sandstone ranges of the Sydney Basin
1539	Grey Myrtle sheltered gully dry rainforest in gullies of the Sydney Basin
1540	Grey Myrtle – Grey Gum gully dry rainforest on sandstone ranges of the Sydney Basin
1546	Sydney Blue Gum – Silvertop Stringybark grassy open forest on ranges of the lower North Coast
1547	Silvertop Stringybark – Messmate – Sydney Blue Gum moist shrub grass tall open forest on ranges of the lower North Coast
1553	Narrow-leaved Peppermint – Forest Ribbon Gum grassy open forest of the New England Tablelands
1554	Messmate – Silvertop Stringybark – Tussock Grass shrub - grass open forest of western Barrington Tops
1555	Mountain Gum – Messmate – Snow Gum grassy open forest of the New England Tablelands
1559	Snow Gum – Mountain Gum grassy open forest on the Barrington plateau
1563	Sydney Blue Gum – New England Blackbutt – Whitetop Box moist shrub “ grass tall open forest of the lower North Coast
1574	Messmate grassy tall open forest on Barrington and Northern Tablelands escarpment
1575	Messmate – Forest Ribbon Gum – New England Blackbutt shrub – grass tall open forest of Barrington Tops and Northern Tablelands escarpment
1577	New England Blackbutt – Forest Ribbon Gum grassy tall open forest of the Northern Tablelands escarpment
1586	White Box – Sticky Daisy Bush – Bead Bush shrubby woodland with semi – evergreen vine thicket elements of the Central Hunter Valley
1587	White Box – Blackthorn shrubby woodland on sandstone ranges of the Sydney Basin
1599	Eucalyptus serpentinicola-Allocasuarina ophiolitica/Spinifex grass low mallee woodland on serpentinite of the lower North Coast
1609	White Box – White Cypress Pine – Native Olive woodland of upper Hunter and northern Wollemi
1613	White Box – Red Box shrubby woodland on sandstone ranges of the Sydney Basin
1617	New England Blackbutt – Diehard Stringybark shrubby open forest on the Northern Tablelands escarpment and Barrington Tops

PCT ID	PCT name
1630	Sydney Peppermint – Grey Gum heathy open forest on sandstone ranges of the Sydney Basin
1631	Sydney Peppermint – Narrow-leaved Stringybark semi-mesic open forest on sandstone ranges of the Sydney Basin
1663	Tumbledown Red Gum – Spinifex grass heathy low open woodland on sandstone slopes of the Sydney Basin
1666	Narrow-leaved Stringybark – Fringe Myrtle – Scaly Phebalium heathy woodland on exposed sandstone ranges of the Sydney Basin
1667	Yertchuk – Grey Gum heathy woodland on sandstone ranges of the Sydney Basin
1679	Dywers Red Gum – Fringe Myrtle heathy open woodland on sandstone plateau of the upper Hunter and Sydney Basin
1681	Smooth-barked Apple – Cabbage Palm – Broad-leaved Mahogany woodland on Wallarah Peninsular
1686	Silvertop Stringybark – Boxthorn woodland on basalt of the Nullo Mountain area
1692	Bull Oak grassy woodland of the central Hunter Valley
1698	Plains grass; Purple wiregrass; Wallaby Grass grassland on basalt soils of the Merriwa plateau
1711	Tantoon – Lepyrodia leptocaulis shrubland on sandstone drainage lines of the Sydney Basin
1738	Spirodella freshwater wetland
1767	Rough-barked Apple grassy tall woodlands of the Brigalow Belt South
1771	Narrow-leaved Ironbark – Dwyers Red Gum - Common Fringe Myrtle heathy open forest of the Western Slopes
2068	Moreton Bay Fig – Myrtle Ebony dry vine rainforest on sandstone at Pillar Rock, east of Grafton, South Eastern Queensland Bioregion
2079	Blakes Wattle – Wilga – Wild Quince – Kurrajong thickets, NSW North Coast Bioregion and New England Tablelands Bioregion
2101	Black Wattle – Hill Kanuka – Coachwood – Mountain Banksia – Soft Corkwood low closed forest on shallow soils of the Dorrigo Escarpment, NSW North Coast Bioregion
3958	Castlereagh Gravel Sedgeland
4041	Lower Hunter Flats Red Gum Mesic Forest